

### LEGEND

- CONSTRUCTION ACCESS
- SCHOOL BUS / EMERGENCY ACCESS
- FACULTY ACCESS
- PARENT DROP-OFF ACCESS
- MAINTAIN ACCESS
- PEDESTRIAN ACCESS
- POST DRIVEN CONSTRUCTION FENCE
- MOVABLE CONSTRUCTION FENCE
- 
- DUMPSTER
- PORTABLE TOILETS
- STORAGE CONTAINER

### SAMPLE SIGNAGE

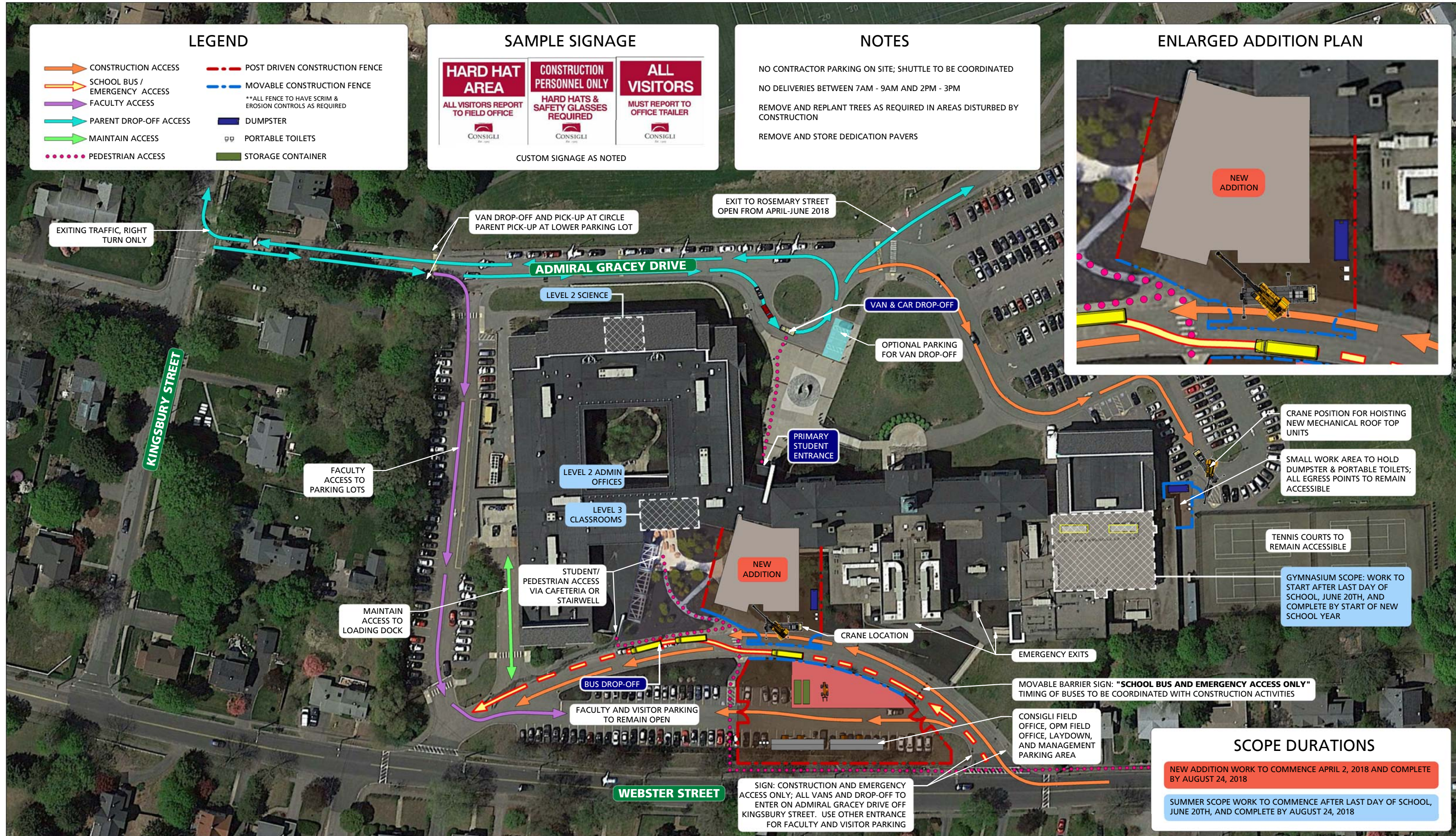
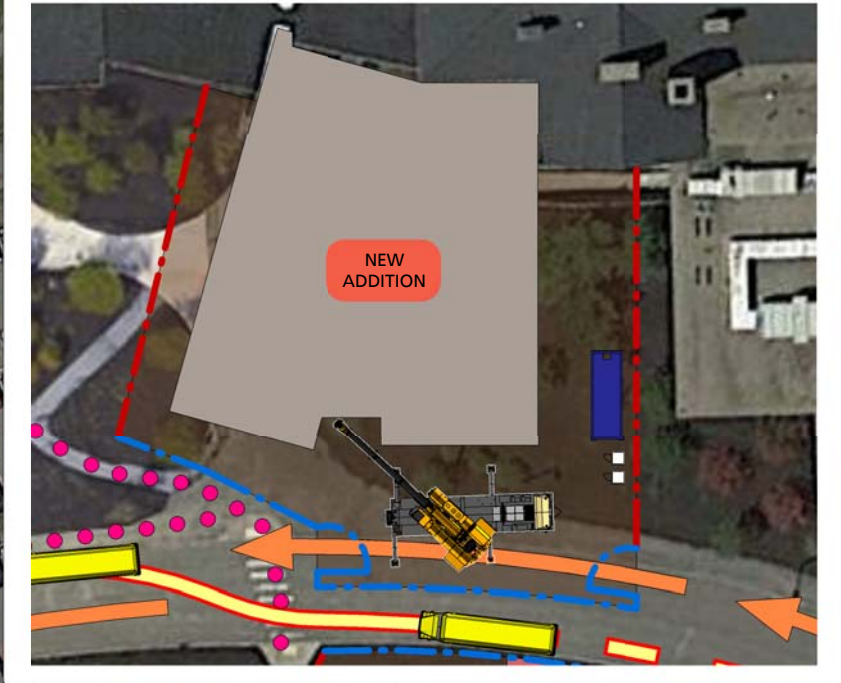


CUSTOM SIGNAGE AS NOTED

### NOTES

- NO CONTRACTOR PARKING ON SITE; SHUTTLE TO BE COORDINATED
- NO DELIVERIES BETWEEN 7AM - 9AM AND 2PM - 3PM
- REMOVE AND REPLANT TREES AS REQUIRED IN AREAS DISTURBED BY CONSTRUCTION
- REMOVE AND STORE DEDICATION PAVERS

### ENLARGED ADDITION PLAN



CRANE POSITION FOR HOISTING NEW MECHANICAL ROOF TOP UNITS

SMALL WORK AREA TO HOLD DUMPSTER & PORTABLE TOILETS; ALL EGRESS POINTS TO REMAIN ACCESSIBLE

TENNIS COURTS TO REMAIN ACCESSIBLE

GYMNASIUM SCOPE: WORK TO START AFTER LAST DAY OF SCHOOL, JUNE 20TH, AND COMPLETE BY START OF NEW SCHOOL YEAR

MOVABLE BARRIER SIGN: "SCHOOL BUS AND EMERGENCY ACCESS ONLY" TIMING OF BUSES TO BE COORDINATED WITH CONSTRUCTION ACTIVITIES

CONSIGLI FIELD OFFICE, OPM FIELD OFFICE, LAYDOWN, AND MANAGEMENT PARKING AREA

#### SCOPE DURATIONS

- NEW ADDITION WORK TO COMMENCE APRIL 2, 2018 AND COMPLETE BY AUGUST 24, 2018
- SUMMER SCOPE WORK TO COMMENCE AFTER LAST DAY OF SCHOOL, JUNE 20TH, AND COMPLETE BY AUGUST 24, 2018

SIGN: CONSTRUCTION AND EMERGENCY ACCESS ONLY; ALL VANS AND DROP-OFF TO ENTER ON ADMIRAL GRACEY DRIVE OFF KINGSBURY STREET. USE OTHER ENTRANCE FOR FACULTY AND VISITOR PARKING



# NEEDHAM HIGH SCHOOL - PRELIMINARY SITE LOGISTICS

