



# *Needham School Committee*

## *Broadmeadow Performance Center*

*December 7, 2021*

*5:30 p.m.*

Broadcast on the Needham Channel municipal and HD channels, live stream at:

<https://needhamchannel.org>

Please click the link below to join the webinar for Public Comments:

<https://us02web.zoom.us/j/84401441816?pwd=M2QvUzhKLzNBaVJncG1MFdWZjNxdz09>

Passcode: **946231** Or One tap mobile :US: +13126266799

*A school and community partnership that creates excited learners, inspires excellence, fosters integrity*

**Needham School Committee**  
**December 7, 2021 5:30 p.m.**  
**Broadmeadow School Performance Center**  
**Next School Committee Meeting: December 21, 2021**

Broadcast on the Needham Channel municipal and HD channels, live stream at: <https://needhamchannel.org>

Please click the link below for **Public Comments**:

<https://us02web.zoom.us/j/84401441816?pwd=M2QvUzhKLzNBaVJncG1MFdWZjNxdz09>

Passcode: **946231** Or One tap mobile :US: +13126266799

**5:30 p.m.      Public Comments**

**Discussion**

**5:40 p.m.      FY2023-37 Projected Enrollment Update**

**6:20 p.m.      School Committee Chair and Subcommittee Updates**

**6:30 p.m.      Superintendent's Comments**

**6:40 p.m.      Consent Items**

1. Approve Minutes of the Meetings of October 5, 2021 and October 19, 2021
2. Accept Donations

**Discussion Items**

**6:45 p.m.      Needham High School Student Advisory Report**

**7:15 p.m.      Superintendent's FY23 School Operating Budget Request**

**8:00 p.m.      Update on Health & Safety**

**8:30 p.m.      School Committee Comments**

**Information Items**

2021-2022 Class Size Reports



## Needham School Committee

December 7, 2021

---

Agenda Item:     **Public Comments**

Background Information:

- The School Committee Chair will offer the opportunity for the public to speak to the School Committee on issues not on the agenda.



## Needham School Committee

December 7, 2021

---

Agenda Item:     **Discussion**

### **FY23-37 Projected Enrollment Update**

Background Information:

- Demographer Jerome McKibben will provide an update on enrollment projections for FY2023-2037.

Person(s) Available for Presentation:

Mr. Jerome McKibben, McKibben Demographics

Ms. Anne Gulati, Assistant Superintendent for Finance & Operations

---



# NEEDHAM PUBLIC SCHOOLS

ASSISTANT SUPERINTENDENT FOR FINANCE & OPERATIONS

ANNE GULATI

1330 HIGHLAND AVENUE \* NEEDHAM, MA 02492  
781-455-0400 EXT. 11206 \* 781-455-0417 (FAX)

November 1, 2021

To: Needham School Committee  
From: Anne Gulati Director of Financial Operations  
RE: FY 23-37 Preliminary Enrollment Projection

Recently, McKibben Demographic Associates completed preliminary enrollment projections for the fifteen-year period FY 2022/23 – 2033/37. These projections, which incorporate both the redistricting-level results from the 2020 Census and Town census of Needham residents under the age of 18, are discussed in greater detail below.

## Current Enrollment

The Needham Public Schools, like many school districts around the country, experienced a significant reduction in the number of enrolled students during the 20/21 School Year, due to COVID-19. As evident from the chart on the next page, Needham lost 221 students, primarily at the elementary level. The largest losses occurred at Preschool and Kindergarten, where parents opted to keep children home, send students to private school or homeschool. The High School enrollment remained relatively stable and consistent with prior year expectations.

The current 21/22 School Year enrollment of 5,526 increases by only 40 students from last year and remains low, relative to pre-Pandemic levels. Additionally, we estimate that only about 45% of the students who demitted last year for COVID-related reasons have returned. (This statistic is based on the number of students who returned in FY22 (58) as a percentage of the 130 incremental FY21 demits over the 238 historical average annual number of demits.) McKibben Demographics notes that return rates of 50-99% are typical across the nation this year, with lower return rates being experienced in communities with mask or vaccine mandates. Needham's more modest 45% return rate may reflect the additional impact that slower home sales have had on the ability of new families to in-migrate to Needham and enroll in Needham public schools. The impact of home sales on in-migration rates is discussed in greater detail below.

Needham Public Schools PreK-12 Total Enrollment by Level																							
McKibben Demographics																					Cum Change	Cum Change	Cum Change
Nov-20 No COVID Best Series	2018-19	2019-20	2020-21	2021-22	2022-23	2023-24	2024-25	2025-26	2026-27	2027-28	2028-29	2029-30	2030-31	2031-32	2032-33	2033-34	2034-35	2035-36	2036-37	FY22-37	FY22-28	FY29-37	
<u>Enrollment</u>																							
PreK	83	72	50	74	75	75	75	75	75	75	75	75	75	75	75	75	75	75	75	1	1	-	
Gr K-5	2,641	2,586	2,468	2,497	2,493	2,466	2,457	2,459	2,465	2,485	2,502	2,515	2,527	2,538	2,539	2,538	2,530	2,517	2,509	12	(12)	24	
Gr 6-8	1,282	1,391	1,295	1,278	1,296	1,376	1,374	1,354	1,332	1,309	1,297	1,292	1,306	1,319	1,327	1,338	1,351	1,363	1,368	90	31	59	
Gr 9-12	1,722	1,658	1,673	1,677	1,670	1,664	1,685	1,709	1,719	1,786	1,778	1,761	1,729	1,708	1,711	1,715	1,732	1,749	1,760	83	109	(26)	
PreK-Total	5,728	5,707	5,486	5,526	5,534	5,581	5,591	5,597	5,591	5,655	5,652	5,643	5,637	5,640	5,652	5,666	5,688	5,704	5,712	186	129	57	
<u>Annual Inc/(Dec)</u>																							
PreK	1	(11)	(22)	24	1	-	-	-	-	-	-	-	-	-	-	-	-	-	-				
Gr K-5	48	(55)	(118)	29	(4)	(27)	(9)	2	6	20	17	13	12	11	1	(1)	(8)	(13)	(8)				
Gr 6-8	(22)	109	(96)	(17)	18	80	(2)	(20)	(22)	(23)	(12)	(5)	14	13	8	11	13	12	5				
Gr 9-12	37	(64)	15	4	(7)	(6)	21	24	10	67	(8)	(17)	(32)	(21)	3	4	17	17	11				
PreK-Total	64	(21)	(221)	40	8	47	10	6	(6)	64	(3)	(9)	(6)	3	12	14	22	16	8				

Students Exited	Exited		Exited		Exited		Exited		Exited		Exited	
Needham Public Schools	FY17		FY18		FY19		FY20		FY21		FY22 YTD	
Total Number Exited	222		238		252		240		368		280	
<u>Breakdown:</u>												
Move Out of State	72	32%	87	37%	92	37%	76	32%	68	18%	54	19%
Attend In-State Private	98	44%	88	37%	113	45%	90	38%	224	61%	159	57%
Attend In-State Publiv (Outside of Needham)	51	23%	57	24%	38	15%	71	30%	52	14%	65	23%
Homeschool	-	0%	1	0%	2	1%	3	1%	21	6%	-	0%
Adult Diploma Program	-	0%	1	0%	1	0%	-	0%	-	0%	-	0%
Confirmed Drop Out	1	0%	2	1%	4	2%	-	0%	2	1%	2	1%
Other	-	0%	2	1%	2	1%	-	0%	1	0%	-	0%
	-		-		-		-		-		-	
Returned in FY22 (of FY21 Demits In Excess of 240 Historic Annual Average)									58 45%			
Source: Needham Public Schools Administrative Technology Office, October 2021												

The October 1 enrollment is also approximately midway between the projected “NO COVID” (budgeted) enrollment of 5,641 and the “COVID” forecast of 5,425 students. If you will recall, the “No COVID” scenario had assumed that a vaccine would be discovered during FY21 and that approximately 85% of demitted students would return to school by September 2021. The “COVID” scenario anticipated that a vaccine would be discovered three to five years in the future and that enrollment would remain depressed in the interim. As evident from the charts below, Needham’s current enrollment of 5,526 is 115 students lower than the budgeted “NO COVID” enrollment of 5,641, and 101 students higher than the “COVID” estimate of 5,425. These results appear to be consistent with the current state of the Pandemic, generally: although a vaccine has

been discovered, COVID-19 has not yet been eradicated. Needham, like other communities around the globe, continues to engage in efforts to contain or prevent the spread of the virus through mask wearing and vaccinations.

2021/22 October 1 Final Enrollment															
BUDGET	Pre-K	K	1	2	3	4	5	6	7	8	9	10	11	12	SP*
Preschool	74														74
Broadmeadow		76	87	84	97	80	92								516
Eliot		73	68	69	75	75	71								431
Mitchell		60	74	74	78	73	91								450
Newman		84	93	102	101	121	93								594
Williams		76	89	86	79	90	86								506
High Rock								450							450
Pollard									383	445					828
High School											431	420	377	441	8
TOTAL	74	369	411	415	430	439	433	450	383	445	431	420	377	441	8

2021/22 NO COVID Budget Enrollment															
BUDGET	Pre-K	K	1	2	3	4	5	6	7	8	9	10	11	12	SP*
Preschool	72														72
Broadmeadow		90	82	74	100	86	94								526
Eliot		70	69	69	73	75	65								421
Mitchell		75	69	75	81	73	90								463
Newman		105	94	108	101	120	97								625
Williams		89	77	90	79	92	91								518
High Rock								455							455
Pollard									406	466					872
High School											451	420	373	441	4
TOTAL	72	429	391	416	434	446	437	455	406	466	451	420	373	441	4

Compare Final 2021/22 October 1 to NO COVID (Budget) Projection															
BUDGET	Pre-K	K	1	2	3	4	5	6	7	8	9	10	11	12	SP*
Preschool	2														2
Broadmeadow		-14	5	10	-3	-6	-2								(10)
Eliot		3	-1	0	2	0	6								10
Mitchell		-15	5	-1	-3	0	1								(13)
Newman		-21	-1	-6	0	1	-4								(31)
Williams		-13	12	-4	0	-2	-5								(12)
High Rock								-5							(5)
Pollard									-23	-21					(44)
High School											-20	0	4	0	4
TOTAL	2	-60	20	-1	-4	-7	-4	-5	-23	-21	-20	0	4	0	4

2021/22 COVID Projection															
BUDGET	Pre-K	K	1	2	3	4	5	6	7	8	9	10	11	12	SP*
Preschool	50														50
Broadmeadow		75	82	71	96	82	90								496
Eliot		64	69	68	71	75	65								412
Mitchell		64	69	69	80	70	85								437
Newman		85	94	104	97	116	92								588
Williams		69	77	83	75	88	87								479
High Rock								446							446
Pollard									390	452					842
High School											436	420	373	441	5
TOTAL	50	357	391	395	419	431	419	446	390	452	436	420	373	441	5

Compare Final 2021/22 October 1 to COVID Projection															
	Pre-K	K	1	2	3	4	5	6	7	8	9	10	11	12	SP*
Preschool	24														24
Broadmeadow		1	5	13	1	-2	2								20
Eliot		9	-1	1	4	0	6								19
Mitchell		-4	5	5	-2	3	6								13
Newman		-1	-1	-2	4	5	1								6
Williams		7	12	3	4	2	-1								27
High Rock								4							4
Pollard									-7	-7					(14)
High School											-5	0	4	0	3
TOTAL	24	12	20	20	11	8	14	4	-7	-7	-5	0	4	0	3

### Summary of Results:

Needham Public Schools PreK-12 Total Enrollment by Level																				
McKibben Demographics																				
Nov-20 No COVID Best Series	2018-19	2019-20	2020-21	2021-22	2022-23	2023-24	2024-25	2025-26	2026-27	2027-28	2028-29	2029-30	2030-31	2031-32	2032-33	2033-34	2034-35	2035-36	2036-37	Cum Change FY22-37
<u>Enrollment</u>																				
PreK	83	72	50	74	75	75	75	75	75	75	75	75	75	75	75	75	75	75	75	1
Gr K-5	2,641	2,586	2,468	2,497	2,493	2,466	2,457	2,459	2,465	2,485	2,502	2,515	2,527	2,538	2,539	2,538	2,530	2,517	2,509	12
Gr 6-8	1,282	1,391	1,295	1,278	1,296	1,376	1,374	1,354	1,332	1,309	1,297	1,292	1,306	1,319	1,327	1,338	1,351	1,363	1,368	90
Gr 9-12	<u>1,722</u>	<u>1,658</u>	<u>1,673</u>	<u>1,677</u>	<u>1,670</u>	<u>1,664</u>	<u>1,685</u>	<u>1,709</u>	<u>1,719</u>	<u>1,786</u>	<u>1,778</u>	<u>1,761</u>	<u>1,729</u>	<u>1,708</u>	<u>1,711</u>	<u>1,715</u>	<u>1,732</u>	<u>1,749</u>	<u>1,760</u>	83
PreK-Total	5,728	5,707	5,486	5,526	5,534	5,581	5,591	5,597	5,591	5,655	5,652	5,643	5,637	5,640	5,652	5,666	5,688	5,704	5,712	186
<u>Annual Inc/(Dec)</u>																				
PreK		(11)	(22)	24	1	-	-	-	-	-	-	-	-	-	-	-	-	-	-	
Gr K-5	48	(55)	(118)	29	(4)	(27)	(9)	2	6	20	17	13	12	11	1	(1)	(8)	(13)	(8)	
Gr 6-8	(22)	109	(96)	(17)	18	80	(2)	(20)	(22)	(23)	(12)	(5)	14	13	8	11	13	12	5	
Gr 9-12	<u>37</u>	<u>(64)</u>	<u>15</u>	<u>4</u>	<u>(7)</u>	<u>(6)</u>	<u>21</u>	<u>24</u>	<u>10</u>	<u>67</u>	<u>(8)</u>	<u>(17)</u>	<u>(32)</u>	<u>(21)</u>	<u>3</u>	<u>4</u>	<u>17</u>	<u>17</u>	<u>11</u>	
PreK-Total	64	(21)	(221)	40	8	47	10	6	(6)	64	(3)	(9)	(6)	3	12	14	22	16	8	

A SCHOOL AND COMMUNITY PARTNERSHIP THAT  
CREATES EXCITED LEARNERS ~ INSPIRES EXCELLENCE ~ FOSTERS INTEGRITY



The projected enrollment series for FY 23-27 is presented in the chart on the previous page.

Going forward, McKibben projects that enrollment will return to pre-Pandemic levels, although more gradually than previously anticipated. The updated forecast assumes that Needham will reach pre-pandemic enrollment levels of approximately 5,700 students, but not until the end of the fifteen year forecast horizon. There are several reasons for this change:

1. The first factor is the impact of recent home sales activity on in-migration rates. Since Needham has experienced more resident deaths than births in four of the past five years, enrollment trends are heavily influenced by the ability of new families to move into Needham and purchase homes. However, Needham has experienced a slowdown in the number of units being turned over since 2019, which has created fewer opportunities for in-migration. McKibben cited the following Willow data on Needham home sales (including apartment rentals): CY2019 670 sales, CY20 507 sales and CY21 YTD 440 sales. McKibben attributes this slowdown both to the economy and a decision on the part of older homeowners to ‘stay put’ in their homes instead of selling. Nationwide, he indicates that older homeowners have increasingly opted to postpone the decision to downsize in order to remain close to caregiver and medical resources during the Pandemic, and because of the general scarcity of elder housing around the country. The decline in home sales is assumed to create fewer opportunities for in-migration, leading to a decline in enrollment overall.
2. A second factor is that fewer students have returned to school than previously anticipated. The “NO COVID” projection series assumed that 85% of the students who demitted in FY21 would return by September 2021. However, a recent survey of families who demitted, but have not yet returned, suggests that a majority may never return to Needham Public Schools. Of 163 families responding, 143 (87.7%) indicated that they do not plan to return to Needham Public Schools. A total of 360 students were invited to participate in the survey.
3. Although Needham's population base has increased by more than 3,200 people (reflecting the updated 2020 census total of 32,091, compared to the 2010 census population of 28,886), Needham’s under 5-year cohort appears to be @ 100 students lower than previously predicted. The smaller population of students under the age of five has reduced the number of elementary students projected in the next few years.
4. The Kendrick and Modera apartment complexes have not yielded as many children as initially projected, possibly due to the high cost of leasing at both locations. The updated forecast for Kendrick is for approximately half (@ 66) of the total number of students originally assumed (125), and for Modera to be for about 70% (@ 44) of the previous total (62.) Kendrick, in particular, has turned out to be housing for young professionals more than young families. McKibben has adjusted his student generation rates downwards for these developments, as a result.

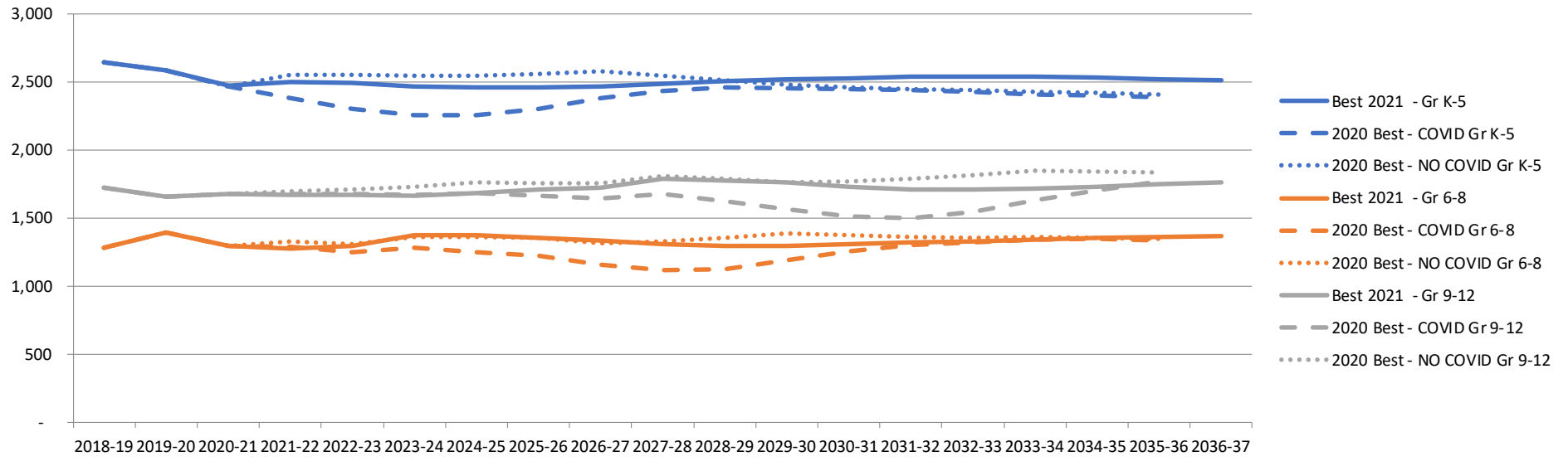
The updated forecast also represents a significant change from prior projections by level (elementary, middle and high). The chart on the next page compares the current forecast series to the “NO COVID” series developed last year. Although the total enrollment projection for FY36 is similar at about 5,700 students, there are significant differences by level in both the short and long-terms. The current series reflects the cumulative impact of student demits and low return rate, which has reduced near-term projected enrollment at every level. The current series also anticipates more elementary students in the long-term than did previous projections, which were for declining elementary enrollment over time. The updated FY36 elementary enrollment (of 2,517 students), is 109 students higher than the previous forecast for 2,408 students. McKibben attributes this to an anticipated surge in the number of young families able to in-migrate after FY25, because many of the older homeowners that had previously

postponed downsizing will reach their 80's and may be forced to involuntarily migrate because they can no longer live independently. McKibben estimates that between 125-200 additional homes will turn over each year between FY25-37, as a result. (This assumption is different from previous forecasts, which had assumed an even distribution of homes being downsized over the fifteen year period.) Secondary enrollment, by contrast, is projected to be lower than previous estimates in the out years, reflecting the cumulative impact of the smaller COVID class sizes moving through the system.

The expected enrollment for FY23 is 5,534 students, which is eight students more than the current year. All of this increase is projected to occur at Grades 6 and 7. However, the FY23 projection is 100 students less than the "NO COVID" projection from last year, with the largest variances at the elementary and NHS levels. A table and chart comparing the updated projection for FY23 to the projection from last year appear below and on the next page. The individual school results are presented in the appendix.

Needham Public Schools PreK-12 Total Enrollment by Level: Current (Nov '2021) v. Prior Year (2020) No COVID Projection																						
McKibben Demographics																					Cum Change	Cum Change
Nov-21 Best Series	2018-19	2019-20	2020-21	2021-22	2022-23	2023-24	2024-25	2025-26	2026-27	2027-28	2028-29	2029-30	2030-31	2031-32	2032-33	2033-34	2034-35	2035-36	2036-37	FY22-36	FY22-28	FY29-36
<u>Current (2021)</u>																						
PreK	83	72	50	71	75	75	75	75	75	75	75	75	75	75	75	75	75	75	75	4	4	-
Gr K-5	2,641	2,586	2,470	2,497	2,493	2,466	2,457	2,459	2,465	2,485	2,502	2,515	2,527	2,538	2,539	2,538	2,530	2,517	2,509	20	(12)	32
Gr 6-8	1,282	1,391	1,297	1,278	1,296	1,376	1,374	1,354	1,332	1,309	1,297	1,292	1,306	1,319	1,327	1,338	1,351	1,363	1,368	85	31	54
Gr 9-12	<u>1,722</u>	<u>1,658</u>	<u>1,678</u>	<u>1,669</u>	<u>1,670</u>	<u>1,664</u>	<u>1,685</u>	<u>1,709</u>	<u>1,719</u>	<u>1,786</u>	<u>1,778</u>	<u>1,761</u>	<u>1,729</u>	<u>1,708</u>	<u>1,711</u>	<u>1,715</u>	<u>1,732</u>	<u>1,749</u>	<u>1,760</u>	80	117	(37)
PreK-Total	5,728	5,707	5,495	5,515	5,534	5,581	5,591	5,597	5,591	5,655	5,652	5,643	5,637	5,640	5,652	5,666	5,688	5,704	5,712	189	140	49
<u>Prior (2020) No COVID</u>																						
PreK	83	72	50	72	72	72	72	72	72	72	72	72	72	72	72	72	72	72	72	-	-	-
Gr K-5	2,641	2,586	2,468	2,553	2,552	2,547	2,546	2,558	2,576	2,545	2,513	2,481	2,460	2,447	2,438	2,426	2,417	2,408		(145)	(8)	(137)
Gr 6-8	1,282	1,391	1,295	1,327	1,304	1,361	1,361	1,355	1,315	1,331	1,355	1,388	1,376	1,362	1,356	1,359	1,355	1,347		20	4	16
Gr 9-12	<u>1,722</u>	<u>1,658</u>	<u>1,673</u>	<u>1,689</u>	<u>1,706</u>	<u>1,726</u>	<u>1,757</u>	<u>1,753</u>	<u>1,751</u>	<u>1,803</u>	<u>1,790</u>	<u>1,766</u>	<u>1,770</u>	<u>1,787</u>	<u>1,812</u>	<u>1,846</u>	<u>1,837</u>	<u>1,831</u>		142	114	28
PreK-Total	5,728	5,707	5,486	5,641	5,634	5,706	5,736	5,738	5,714	5,751	5,730	5,707	5,678	5,668	5,678	5,703	5,681	5,658		17	110	(93)
<u>Variance</u>																						
PreK	-	-	-	(1)	3	3	3	3	3	3	3	3	3	3	3	3	3	3	3			
Gr 1-5	-	-	2	(56)	(59)	(81)	(89)	(99)	(111)	(60)	(11)	34	67	91	101	112	113	109				
Gr 6-8	-	-	2	(49)	(8)	15	13	(1)	17	(22)	(58)	(96)	(70)	(43)	(29)	(21)	(4)	16				
Gr 9-12	-	-	5	(20)	(36)	(62)	(72)	(44)	(32)	(17)	(12)	(5)	(41)	(79)	(101)	(131)	(105)	(82)				
PreK-Total	-	-	9	(126)	(100)	(125)	(145)	(141)	(123)	(96)	(78)	(64)	(41)	(28)	(26)	(37)	7	46				

## FY19-37 Elementary Erollment Compared to Prior Year Projections Nov '21 (Current) vs Dec '20 (Prior)



### Study Assumptions:

The preliminary projections are based the following general assumptions:

1. The 'best' population estimates are based on existing and new development, which is either under construction or at the review/ permitting stage (permitted or about to be permitted.) New development included in the 'best' scenarios include:
  - a. Modera (700 Greendale Avenue) - Broadmeadow Elementary School
    - i. This development fully opened for occupancy in January 2019 with 136 units: 19 1-bedroom, 103 2-bedroom, 14 3-bedroom. This development is now considered fully occupied.
    - ii. The updated student generation rates are: 1-bdrm: 0 students/ unit; 2-bdrm: 0.07 students/unit; 3-bdrm: 0.11 students/unit. (These rates are down from 0.1 @ 2-bdrm and 0.15 @ 3-bdrm, used in previous projections.)
    - iii. The current projection assumes 8.75 students per year for five years, beginning FY21, for a total of 44 new students by FY25. This estimate is reduced from the prior assumption of 12.4 students per year over five years, or 62 new students.
    - iv. 41 students are currently enrolled (the same as last year.)

- v. Rents start at \$5,313 for townhomes, and \$3,886 for two bedroom units.
- b. Kendrick (Eliot)
  - i. This development fully opened for occupancy in July 2019 with 390 units: 202 1-bedroom, 149 2-bedroom, and 39 3-bedroom. This development is now considered fully occupied. (In FY21, the occupancy rate was 72.3%, compared to 50% in FY20.)
  - ii. The updated student generation rates are: 1-bdrm: 0 students/ unit; 2-bdrm: 0.06 students/unit; 3-bdrm: 0.11 students/unit. (These rates are down from 0.1 @ 2-bdrm and 0.15 @ 3-bdrm.)
  - iii. The current projection assumes 13.23 students per year for five years, beginning FY21, for a total of 66 new students by FY25. This estimate is reduced from the prior assumption of 20.75 students per year over six years, for a total of 124.5 new students.
  - iv. 50 students are currently enrolled (up from 46 at this time last year.)
  - v. Rents for 2-bedroom units range from \$3,450 to \$4,300/month; rents for 3-bedroom units range from \$4,900 to \$5,300/month
- c. Charles River (Eliot)
  - i. 14 students are currently enrolled (down from 18 last year.)
- d. Heather Lane (764-768A Chestnut Street) - Newman Elementary
  - i. New approved subdivision on approximately 13 acres.
  - ii. There will be a total of 11 new lots created by a series of applications (two subdivision applications and a residential compound.) Approximately seven of these will be new building lots for single family homes. According to the Building Commissioner, Needham has just begun to issue permits. So far, one home for 7 bedrooms has been permitted.
  - iii. Assume occupancy by 2023
- e. 400 Hunnewell - Eliot Elementary
  - i. New, 8-unit condominium building with two bedrooms each.
  - ii. Permitted 2020, Assume occupancy by 2023.

2. For “high” enrollment projections – prospective or conceptual development only

- a. Residential Overlay Placeholder – Eliot Elementary
- b. Placeholder for 250-unit development in Eliot district (125 1-bedroom, 100 2-bedroom, 25 3-bedroom.) No specific proposal as yet under consideration; developers still trying to assemble parcels.
- c. The updated student generation rates are: 1-bdrm: 0 students/ unit; 2-bdrm: 0.06 students/unit; 3-bdrm: 0.11 students/unit. (These rates are down from 0.1 @ 2-bdrm and 0.15 @ 3-bdrm, used in previous projections.)
- d. The high series projection assumes 8.75 students per year for six years, for a total of 52.5 new students between July 2025 - June 3031. This estimate is reduced from the prior assumption of 13.75 students /year, or a total of 82.5 new students.

3. Method of analysis remains cohort-component method of population forecasting.

4. The population forecast is calibrated to the total population results of the U.S. 2020 Decennial Census. In addition, the enrollment forecast

incorporates Town census data for residents under the age of 18, current home sales trends and the Needham Public Schools 'demits' survey.

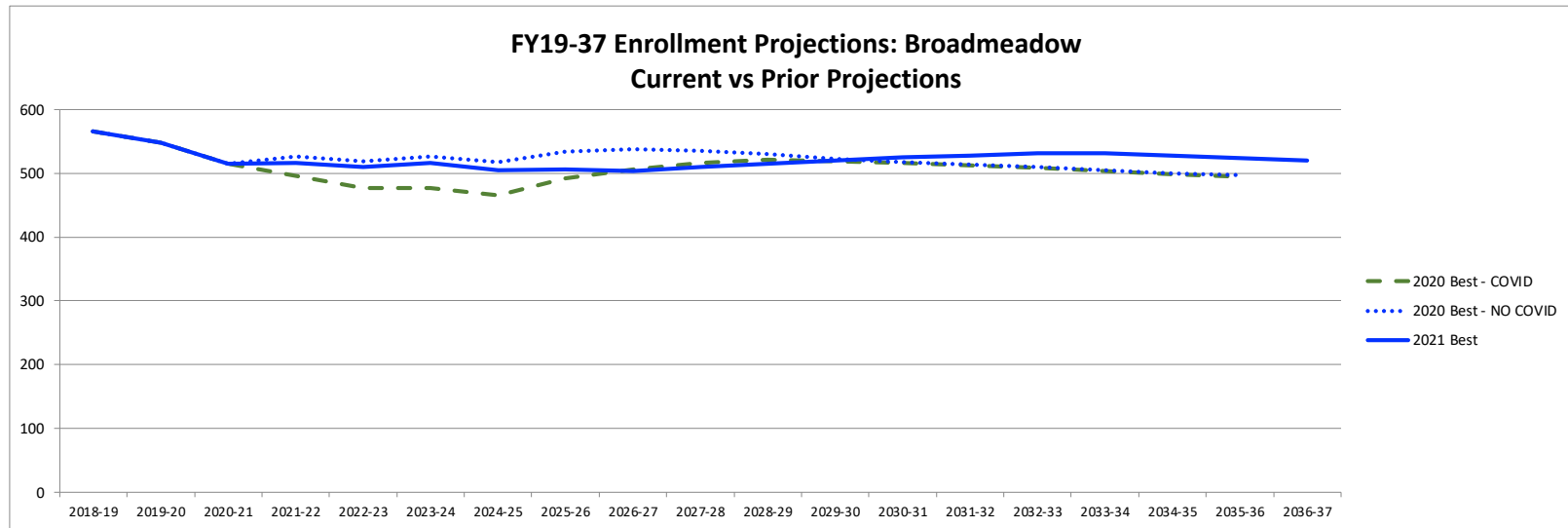
5. The economic parameters assumed over the life of the forecast: the 30-year fixed mortgage interest rate stays below 4.5%, and the average annual unemployment rate stays below 7.5%.
6. An average of 60 new homes are assumed to be constructed each year.
7. Sales of existing single family homes will average 210 per year until 2030, and then rise to 240 by 2036.

ALG/alg

Attachment(s)

Needham Public Schools Total Enrollment - FY 12/13 - 36/37 "Best" Projection																				
DISTRICT McKibben "Best" Nov '2021	2018-19	2019-20	2020-21	2021-22	2022-23	2023-24	2024-25	2025-26	2026-27	2027-28	2028-29	2029-30	2030-31	2031-32	2032-33	2033-34	2034-35	2035-36	2036-37	
PK	83	72	50	74	75	75	75	75	75	75	75	75	75	75	75	75	75	75	75	
K	412	390	333	369	382	386	388	392	396	397	398	401	400	398	393	390	388	386	391	
1	430	436	402	411	391	395	399	401	405	409	410	411	414	413	411	407	405	403	400	
2	434	441	425	415	417	400	404	409	410	415	419	419	420	424	422	422	418	416	413	
3	460	434	438	430	421	423	407	411	417	419	424	428	428	430	432	431	430	426	424	
4	413	463	428	439	431	426	428	413	417	423	423	428	432	435	438	441	439	438	434	
5	492	422	442	433	451	436	431	433	420	422	428	428	433	438	443	447	450	448	447	
Total: K-5	2,641	2,586	2,468	2,497	2,493	2,466	2,457	2,459	2,465	2,485	2,502	2,515	2,527	2,538	2,539	2,538	2,530	2,517	2,509	
6	450	499	394	450	460	462	447	440	439	426	428	434	437	439	445	450	454	457	455	
7	440	460	461	383	456	467	469	454	444	443	430	432	441	441	443	447	452	456	459	
8	392	432	440	445	380	447	458	460	449	440	439	426	428	439	439	441	445	450	454	
Total: 7-8	832	892	901	828	836	914	927	914	893	883	869	858	869	880	882	888	897	906	913	
9	450	380	424	431	447	378	445	456	458	447	438	437	424	426	437	437	439	443	448	
10	428	453	377	420	428	443	374	441	451	453	443	434	433	420	424	435	435	437	441	
11	404	421	445	377	416	424	439	370	437	446	448	439	430	429	418	422	433	433	435	
12	436	401	423	441	372	412	420	435	366	433	442	444	435	426	425	414	418	429	429	
SP	4	3	4	8	7	7	7	7	7	7	7	7	7	7	7	7	7	7	7	
Total: 9-12	1,722	1,658	1,673	1,677	1,670	1,664	1,685	1,709	1,719	1,786	1,778	1,761	1,729	1,708	1,711	1,715	1,732	1,749	1,760	
Total: PreK-12	5,728	5,707	5,486	5,526	5,534	5,581	5,591	5,597	5,591	5,655	5,652	5,643	5,637	5,640	5,652	5,666	5,688	5,704	5,712	
Total: K-12	5,645	5,635	5,436	5,452	5,459	5,506	5,516	5,522	5,516	5,580	5,577	5,568	5,562	5,565	5,577	5,591	5,613	5,629	5,637	
Total PreK-12	5,728	5,707	5,486	5,526	5,534	5,581	5,591	5,597	5,591	5,655	5,652	5,643	5,637	5,640	5,652	5,666	5,688	5,704	5,712	
Change	64	(21)	(221)	40	8	47	10	6	(6)	64	(3)	(9)	(6)	3	12	14	22	16	8	
% Change	1.1%	-0.4%	-3.9%	0.7%	0.1%	0.8%	0.2%	0.1%	-0.1%	1.1%	-0.1%	-0.2%	-0.1%	0.1%	0.2%	0.2%	0.4%	0.3%	0.1%	

## Broadmeadow Elementary



### BROADMEADOW

#### McKibben "Best"

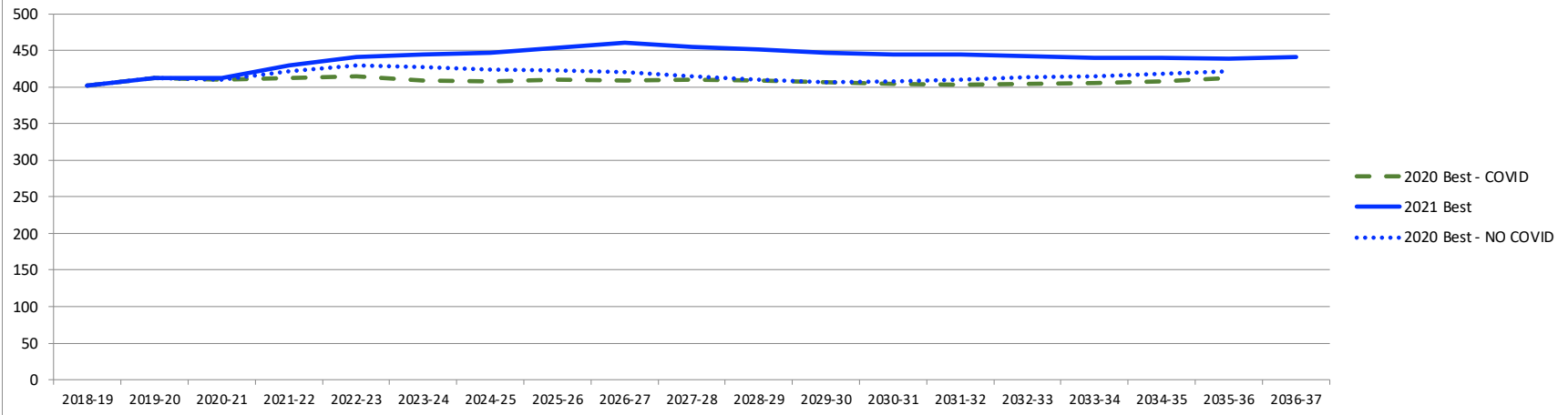
Nov-21	2018-19	2019-20	2020-21	2021-22	2022-23	2023-24	2024-25	2025-26	2026-27	2027-28	2028-29	2029-30	2030-31	2031-32	2032-33	2033-34	2034-35	2035-36	2036-37
K	97	77	74	76	77	78	79	80	82	83	83	84	84	83	82	81	80	79	80
1	83	102	73	87	79	80	81	82	83	85	86	86	87	87	86	85	84	83	82
2	95	84	98	84	89	81	82	83	84	85	87	88	88	89	89	89	88	87	85
3	96	95	85	97	86	91	83	84	85	87	88	90	91	91	91	91	91	90	89
4	86	97	93	80	98	87	92	84	85	86	86	87	89	90	92	92	92	92	91
5	109	93	92	92	81	99	88	93	85	84	85	85	86	88	91	93	93	93	93
<b>Total K-5</b>	<b>566</b>	<b>548</b>	<b>515</b>	<b>516</b>	<b>510</b>	<b>516</b>	<b>505</b>	<b>506</b>	<b>504</b>	<b>510</b>	<b>515</b>	<b>520</b>	<b>525</b>	<b>528</b>	<b>531</b>	<b>531</b>	<b>528</b>	<b>524</b>	<b>520</b>
<b>Total K-5</b>	<b>566</b>	<b>548</b>	<b>515</b>	<b>516</b>	<b>510</b>	<b>516</b>	<b>505</b>	<b>506</b>	<b>504</b>	<b>510</b>	<b>515</b>	<b>520</b>	<b>525</b>	<b>528</b>	<b>531</b>	<b>531</b>	<b>528</b>	<b>524</b>	<b>520</b>
<b>Change</b>	<b>23</b>	<b>-18</b>	<b>-33</b>	<b>1</b>	<b>-6</b>	<b>6</b>	<b>-11</b>	<b>1</b>	<b>-2</b>	<b>6</b>	<b>5</b>	<b>5</b>	<b>5</b>	<b>3</b>	<b>3</b>	<b>0</b>	<b>-3</b>	<b>-4</b>	<b>-4</b>
<b>% Change</b>	<b>4.2%</b>	<b>-3.2%</b>	<b>-6.0%</b>	<b>0.2%</b>	<b>-1.2%</b>	<b>1.2%</b>	<b>-2.1%</b>	<b>0.2%</b>	<b>-0.4%</b>	<b>1.2%</b>	<b>1.0%</b>	<b>1.0%</b>	<b>1.0%</b>	<b>0.6%</b>	<b>0.6%</b>	<b>0.0%</b>	<b>-0.6%</b>	<b>-0.8%</b>	<b>-0.8%</b>

### McKibben

Nov-21	2018-19	2019-20	2020-21	2021-22	2022-23	2023-24	2024-25	2025-26	2026-27	2027-28	2028-29	2029-30	2030-31	2031-32	2032-33	2033-34	2034-35	2035-36	2036-37
<b>2021 Best</b>	<b>566</b>	<b>548</b>	<b>515</b>	<b>516</b>	<b>510</b>	<b>516</b>	<b>505</b>	<b>506</b>	<b>504</b>	<b>510</b>	<b>515</b>	<b>520</b>	<b>525</b>	<b>528</b>	<b>531</b>	<b>531</b>	<b>528</b>	<b>524</b>	<b>520</b>
<b>2020 Best - COVID</b>	<b>566</b>	<b>548</b>	<b>515</b>	<b>496</b>	<b>477</b>	<b>477</b>	<b>466</b>	<b>492</b>	<b>506</b>	<b>516</b>	<b>521</b>	<b>519</b>	<b>516</b>	<b>513</b>	<b>509</b>	<b>503</b>	<b>498</b>	<b>495</b>	
<b>Inc/(Dec) Over 2020 Covid</b>	<b>-</b>	<b>-</b>	<b>-</b>	<b>20</b>	<b>33</b>	<b>39</b>	<b>39</b>	<b>14</b>	<b>(2)</b>	<b>(6)</b>	<b>(6)</b>	<b>1</b>	<b>9</b>	<b>15</b>	<b>22</b>	<b>28</b>	<b>30</b>	<b>29</b>	
<b>2020 Best - NO COVID</b>	<b>566</b>	<b>548</b>	<b>515</b>	<b>526</b>	<b>519</b>	<b>526</b>	<b>517</b>	<b>534</b>	<b>538</b>	<b>535</b>	<b>530</b>	<b>523</b>	<b>517</b>	<b>514</b>	<b>510</b>	<b>505</b>	<b>500</b>	<b>497</b>	
<b>Inc/(Dec) Over 2020 No Covid</b>	<b>-</b>	<b>-</b>	<b>-</b>	<b>(10)</b>	<b>(9)</b>	<b>(10)</b>	<b>(12)</b>	<b>(28)</b>	<b>(34)</b>	<b>(25)</b>	<b>(15)</b>	<b>(3)</b>	<b>8</b>	<b>14</b>	<b>21</b>	<b>26</b>	<b>28</b>	<b>27</b>	

## Eliot Elementary

### FY19-37 Enrollment Projections: Eliot Current vs Prior Projections

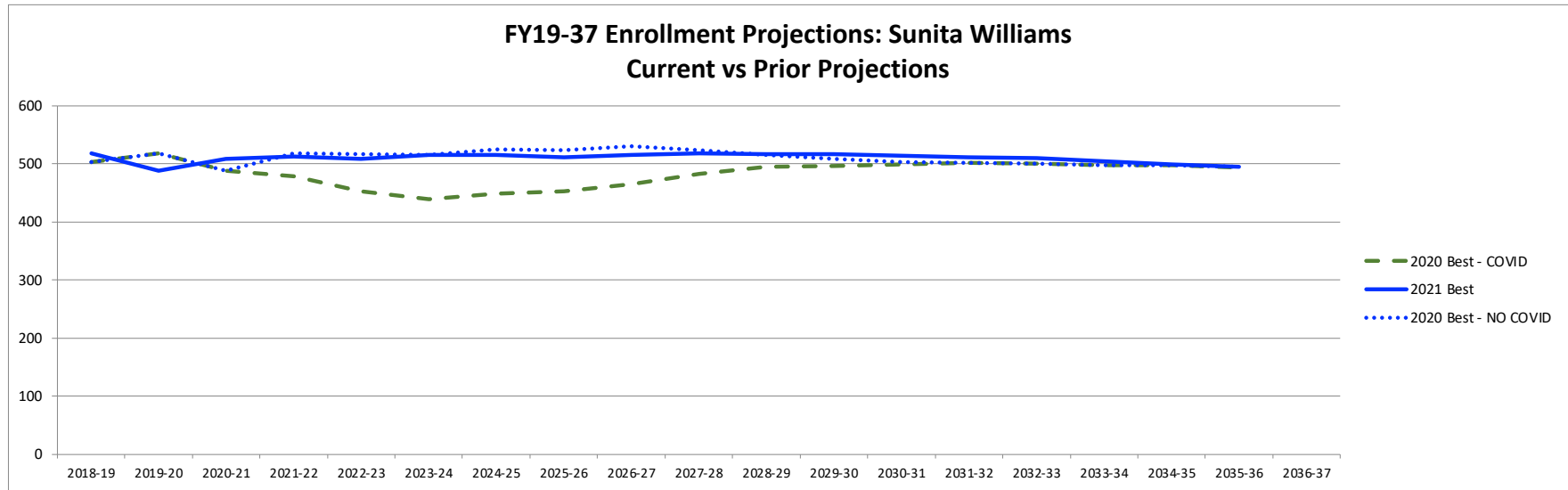


ELIOT McKibben "Best" Nov '2021																			
	2018-19	2019-20	2020-21	2021-22	2022-23	2023-24	2024-25	2025-26	2026-27	2027-28	2028-29	2029-30	2030-31	2031-32	2032-33	2033-34	2034-35	2035-36	2036-37
K	60	64	61	73	74	74	73	73	72	72	71	71	70	70	69	69	70	71	72
1	70	67	67	68	76	75	75	74	74	73	73	72	72	71	71	70	70	71	72
2	59	75	72	69	68	78	77	77	75	75	74	74	73	74	73	73	72	72	73
3	68	61	74	75	70	69	80	78	78	76	76	75	75	74	75	74	74	73	73
4	69	73	64	75	77	71	70	81	79	79	77	77	76	77	75	77	75	75	74
5	76	72	72	71	76	78	72	71	82	80	80	78	78	78	79	77	79	77	77
Total: K-5	402	412	410	431	441	445	447	454	460	455	451	447	444	444	442	440	440	439	441
Total: K-5	402	412	410	431	441	445	447	454	460	455	451	447	444	444	442	440	440	439	441
Change	9	10	-2	21	10	4	2	7	6	-5	-4	-4	-3	0	-2	-2	0	-1	2
% Change	2.3%	2.5%	-0.5%	5.1%	2.3%	0.9%	0.4%	1.6%	1.3%	-1.1%	-0.9%	-0.9%	-0.7%	0.0%	-0.5%	-0.5%	0.0%	-0.2%	0.5%

McKibben Nov '2021																			
	2018-19	2019-20	2020-21	2021-22	2022-23	2023-24	2024-25	2025-26	2026-27	2027-28	2028-29	2029-30	2030-31	2031-32	2032-33	2033-34	2034-35	2035-36	2036-37
2021 Best	402	412	410	431	441	445	447	454	460	455	451	447	444	444	442	440	440	439	441
2020 Best - COVID	402	412	410	412	415	409	408	410	409	410	409	406	404	403	404	405	408	412	
Inc/(Dec) Over 2020 Covid	-	-	-	19	26	36	39	44	51	45	42	41	40	41	38	35	32	27	
2020 Best - NO COVID	402	412	410	421	430	427	424	423	420	415	410	406	408	410	413	415	418	422	
Inc/(Dec) Over 2020 No Covid	-	-	-	10	11	18	23	31	40	40	41	41	36	34	29	25	22	17	



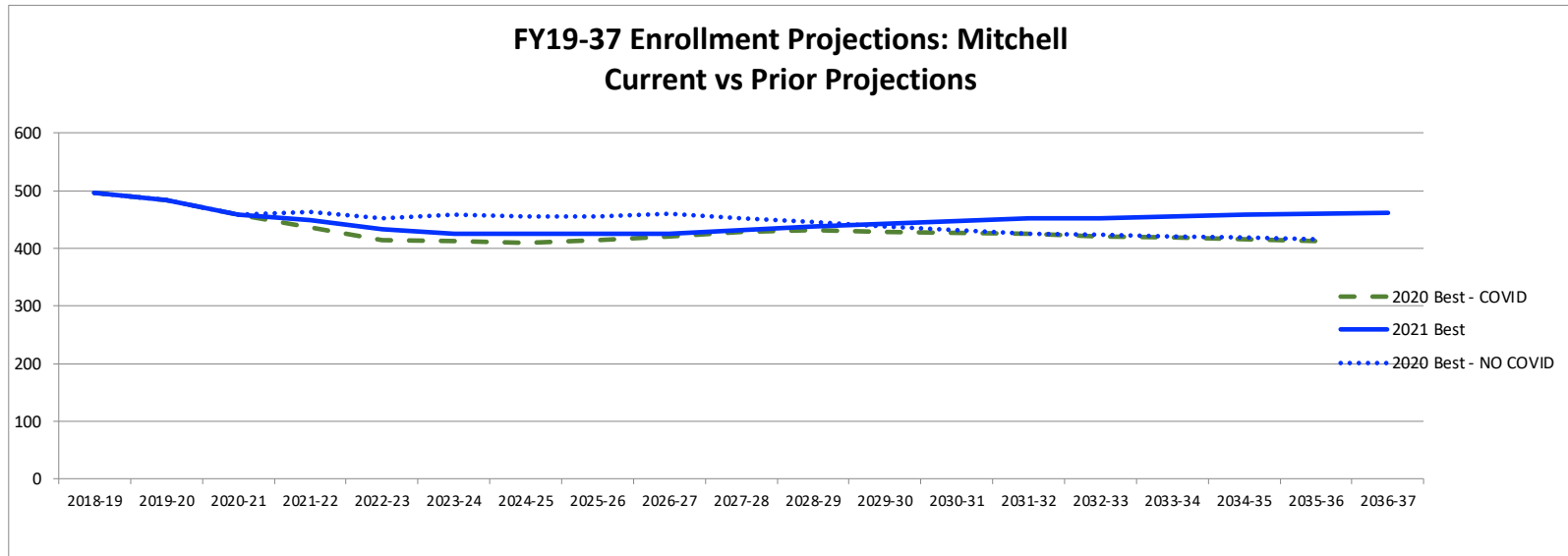
## Williams Elementary



WILLIAMS McKibben "Best" Nov '2021																			
	2018-19	2019-20	2020-21	2021-22	2022-23	2023-24	2024-25	2025-26	2026-27	2027-28	2028-29	2029-30	2030-31	2031-32	2032-33	2033-34	2034-35	2035-36	2036-37
K	76	83	59	76	80	81	81	82	82	81	81	80	80	79	78	77	76	75	77
1	86	80	85	89	81	82	83	83	84	84	83	83	82	82	81	80	79	78	77
2	90	92	77	86	92	83	84	85	85	87	87	85	85	84	84	83	82	81	80
3	88	93	90	79	87	93	84	85	87	87	89	89	87	87	86	87	85	84	83
4	76	92	89	90	80	88	94	85	86	88	88	90	90	90	90	89	90	88	87
5	87	78	88	86	92	81	89	95	87	88	90	90	92	92	92	93	92	93	91
Total: K-5	503	518	488	506	512	508	515	515	511	515	518	517	516	514	511	509	504	499	495
Total: K-5	503	518	488	506	512	508	515	515	511	515	518	517	516	514	511	509	504	499	495
Change	16	15	-30	18	6	-4	7	0	-4	4	3	-1	-1	-2	-3	-2	-5	-5	-4
% Change	3.3%	3.0%	-5.8%	3.7%	1.2%	-0.8%	1.4%	0.0%	-0.8%	0.8%	0.6%	-0.2%	-0.2%	-0.4%	-0.6%	-0.4%	-1.0%	-1.0%	-0.8%

McKibben Nov '2021																			
	2018-19	2019-20	2020-21	2021-22	2022-23	2023-24	2024-25	2025-26	2026-27	2027-28	2028-29	2029-30	2030-31	2031-32	2032-33	2033-34	2034-35	2035-36	2036-37
2021 Best	503	518	488	506	512	508	515	515	511	515	518	517	516	514	511	509	504	499	495
2020 Best - COVID Inc/(Dec) Over 2020 Covid	402 (101)	518 -	488 -	479 27	452 60	439 69	448 67	453 62	465 46	483 32	495 23	496 21	499 17	501 13	500 11	497 12	497 7	493 6	
2020 Best - NO COVID Inc/(Dec) Over 2020 No Covid	402 -	518 -	488 -	518 (12)	516 (4)	515 (7)	525 (10)	523 (8)	530 (19)	523 (8)	515 3	508 9	503 13	501 13	500 11	497 12	497 7	495 4	

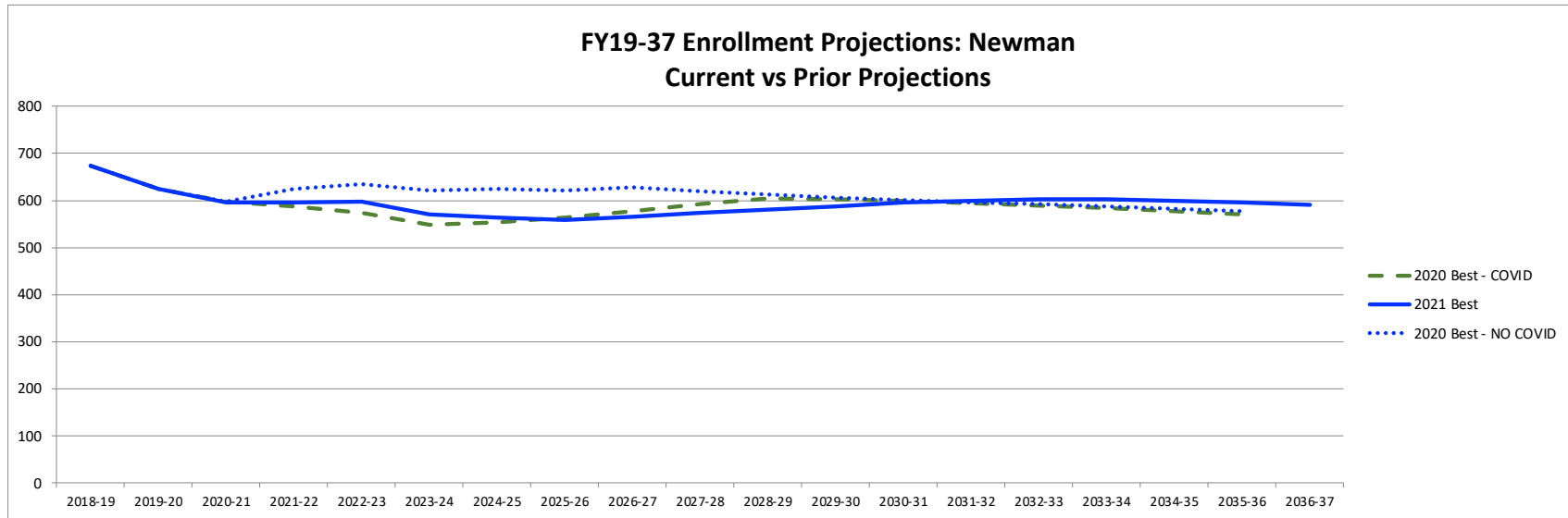
## Mitchell Elementary



MITCHELL McKibben "Best" Nov '2021																			
	2018-19	2019-20	2020-21	2021-22	2022-23	2023-24	2024-25	2025-26	2026-27	2027-28	2028-29	2029-30	2030-31	2031-32	2032-33	2033-34	2034-35	2035-36	2036-37
K	78	65	61	60	65	66	67	68	69	69	70	71	71	72	71	71	71	71	71
1	69	83	71	74	66	68	69	70	71	72	72	73	74	74	75	75	76	76	75
2	88	70	79	74	74	67	69	71	72	73	74	74	75	76	75	77	77	78	78
3	94	88	71	78	75	75	68	70	72	73	74	75	75	77	77	76	78	78	79
4	86	94	87	73	73	76	76	69	71	73	74	75	76	76	78	78	77	79	79
5	81	84	89	91	80	74	77	77	70	72	74	75	76	77	77	79	79	78	80
Total K-5	496	484	458	450	433	426	426	425	425	432	438	443	447	452	453	456	458	460	462
Total K-5	496	484	458	450	433	426	426	425	425	432	438	443	447	452	453	456	458	460	462
Change	-2	-12	-26	-8	-17	-7	0	-1	0	7	6	5	4	5	1	3	2	2	2
% Change	-0.4%	-2.4%	-5.4%	-1.7%	-3.8%	-1.6%	0.0%	-0.2%	0.0%	1.6%	1.4%	1.1%	0.9%	1.1%	0.2%	0.7%	0.4%	0.4%	0.4%

McKibben Nov '2021																			
	2018-19	2019-20	2020-21	2021-22	2022-23	2023-24	2024-25	2025-26	2026-27	2027-28	2028-29	2029-30	2030-31	2031-32	2032-33	2033-34	2034-35	2035-36	2036-37
2021 Best	496	484	458	450	433	426	426	425	425	432	438	443	447	452	453	456	458	460	462
2020 Best - COVID	496	484	458	437	414	412	409	415	421	429	432	428	427	425	421	419	416	412	
Inc/(Dec) Over 2020 Covid	-	-	-	13	19	14	17	10	4	3	6	15	20	27	32	37	42	48	
2020 Best - NO COVID	496	484	458	463	452	458	455	456	460	453	446	438	431	426	423	421	419	416	
Inc/(Dec) Over 2020 No Covid	-	-	-	(13)	(19)	(32)	(29)	(31)	(35)	(21)	(8)	5	16	26	30	35	39	44	

## Newman Elementary

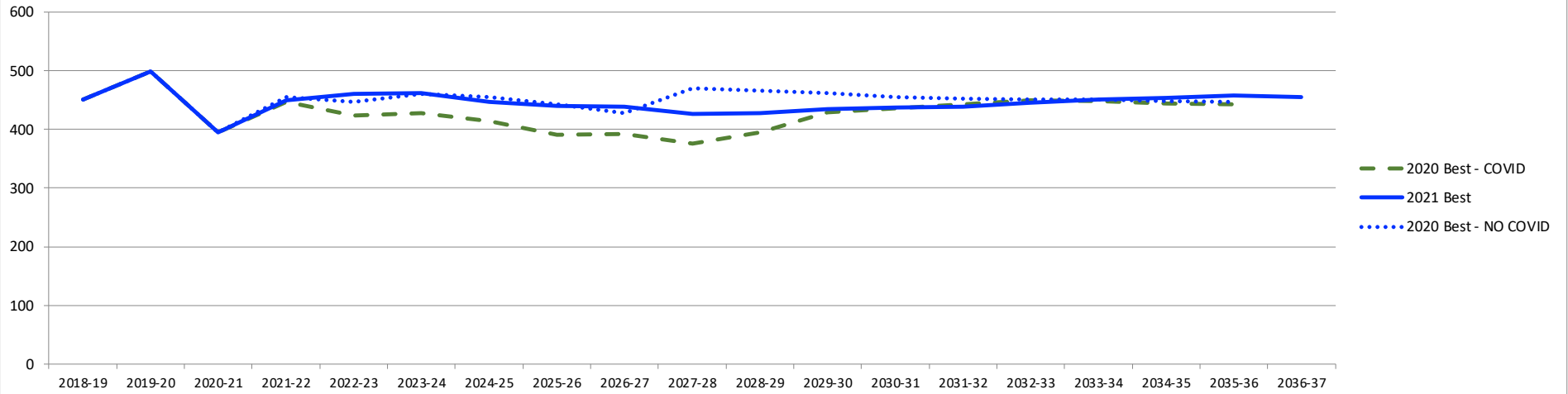


NEWMAN McKibben "Best" Nov '2021	2018-19	2019-20	2020-21	2021-22	2022-23	2023-24	2024-25	2025-26	2026-27	2027-28	2028-29	2029-30	2030-31	2031-32	2032-33	2033-34	2034-35	2035-36	2036-37
K	101	101	78	84	86	87	88	89	91	92	93	95	95	94	93	92	91	90	91
1	122	104	106	93	89	90	91	92	93	95	96	97	99	99	98	97	96	95	94
2	102	120	99	102	94	91	92	93	94	95	97	98	99	101	101	100	99	98	97
3	114	97	118	101	103	95	92	94	95	96	97	99	100	101	103	103	102	101	100
4	96	107	95	121	103	104	96	94	96	97	98	99	101	102	103	105	105	104	103
5	139	95	101	93	122	104	105	97	96	98	99	100	101	103	104	105	107	107	106
Total K-5	674	624	597	594	597	571	564	559	565	573	580	588	595	600	602	602	600	595	591
Total K-5	674	624	597	594	597	571	564	559	565	573	580	588	595	600	602	602	600	595	591
Change	2	-50	-27	-3	3	-26	-7	-5	6	8	7	8	7	5	2	0	-2	-5	-4
% Change	0.3%	-7.4%	-4.3%	-0.5%	0.5%	-4.4%	-1.2%	-0.9%	1.1%	1.4%	1.2%	1.4%	1.2%	0.8%	0.3%	0.0%	-0.3%	-0.8%	-0.7%

McKibben Nov '2021	2018-19	2019-20	2020-21	2021-22	2022-23	2023-24	2024-25	2025-26	2026-27	2027-28	2028-29	2029-30	2030-31	2031-32	2032-33	2033-34	2034-35	2035-36	2036-37
2021 Best	674	624	597	594	597	571	564	559	565	573	580	588	595	600	602	602	600	595	591
2020 Best - COVID Inc/(Dec) Over 2020 Covid	674	624	597	588	574	549	554	564	577	592	604	603	599	594	589	584	578	571	
	-	-	-	6	23	22	10	(5)	(12)	(19)	(24)	(15)	(4)	6	13	18	22	24	
2020 Best - NO COVID Inc/(Dec) Over 2020 No Covid	674	624	597	625	635	621	625	622	628	619	612	606	601	596	592	588	583	578	
	-	-	-	(31)	(38)	(50)	(61)	(63)	(63)	(46)	(32)	(18)	(6)	4	10	14	17	17	

## High Rock Middle

### FY19-37 Enrollment Projections: High Rock Current vs Prior Projections

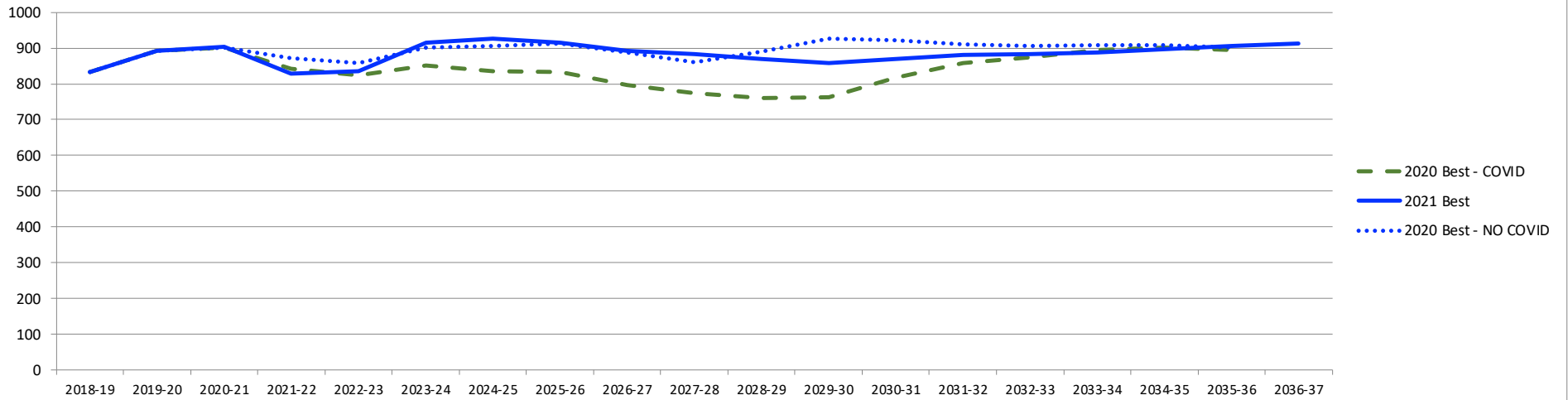


HIGH ROCK McKibben "Best" Nov '2021																			
	2018-19	2019-20	2020-21	2021-22	2022-23	2023-24	2024-25	2025-26	2026-27	2027-28	2028-29	2029-30	2030-31	2031-32	2032-33	2033-34	2034-35	2035-36	2036-37
6	450	499	394	450	460	462	447	440	439	426	428	434	437	439	445	450	454	457	455
Total: 6	450	499	394	450	460	462	447	440	439	426	428	434	437	439	445	450	454	457	455
Total: 6	450	499	394	450	460	462	447	440	439	426	428	434	437	439	445	450	454	457	455
Change	0	49	-105	56	10	2	-15	-7	-1	-13	2	6	3	2	6	5	4	3	-2
% Change	0.0%	10.9%	-21.0%	14.2%	2.2%	0.4%	-3.2%	-1.6%	-0.2%	-3.0%	0.5%	1.4%	0.7%	0.5%	1.4%	1.1%	0.9%	0.7%	-0.4%

McKibben																			
Nov '2021	2018-19	2019-20	2020-21	2021-22	2022-23	2023-24	2024-25	2025-26	2026-27	2027-28	2028-29	2029-30	2030-31	2031-32	2032-33	2033-34	2034-35	2035-36	2036-37
2021 Best	450	499	394	450	460	462	447	440	439	426	428	434	437	439	445	450	454	457	455
2020 Best - COVID	450	499	394	446	423	428	414	390	392	376	395	429	435	442	449	448	444	442	
Inc/(Dec) Over 2020 Covid	-	-	-	4	37	34	33	50	47	50	33	5	2	(3)	(4)	2	10	15	
2020 Best - NO COVID	450	499	394	455	446	460	455	442	427	470	466	461	455	452	451	451	448	446	
Inc/(Dec) Over 2020 No Covi	-	-	-	(5)	14	2	(8)	(2)	12	(44)	(38)	(27)	(18)	(13)	(6)	(1)	6	11	

## Pollard Middle

### FY19-37 Enrollment Projections: Pollard Current vs Prior Projections

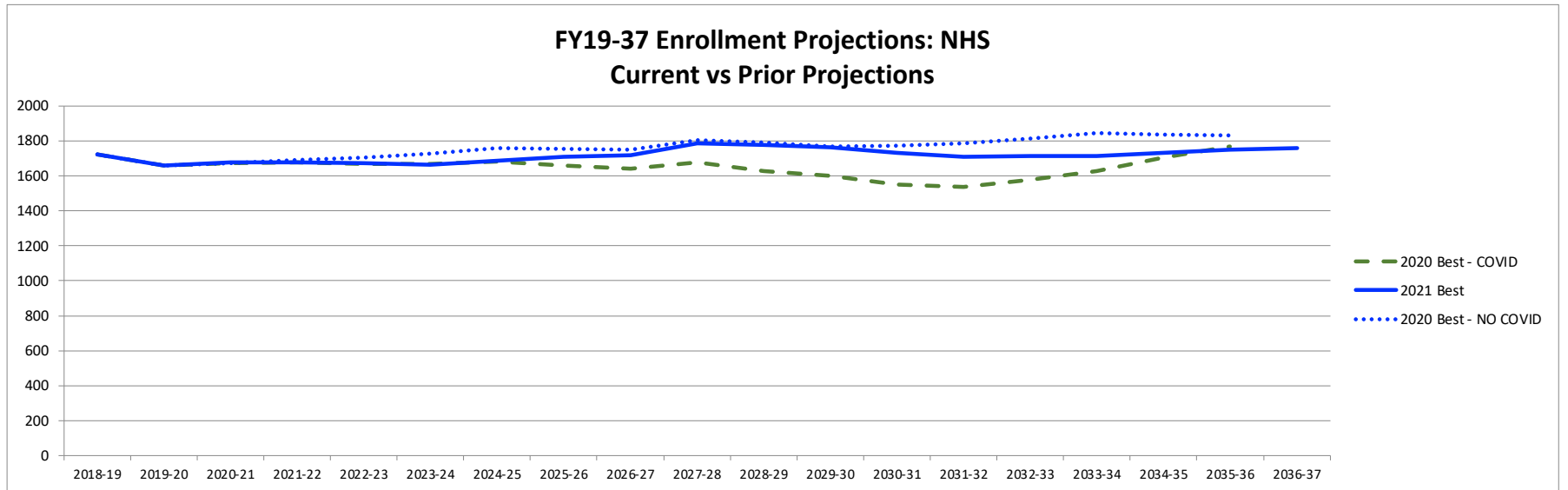


POLLARD McKibben "Best" Nov '2021																			
	2018-19	2019-20	2020-21	2021-22	2022-23	2023-24	2024-25	2025-26	2026-27	2027-28	2028-29	2029-30	2030-31	2031-32	2032-33	2033-34	2034-35	2035-36	2036-37
7	440	460	461	383	456	467	469	454	444	443	430	432	441	441	443	447	452	456	459
8	392	432	440	445	380	447	458	460	449	440	439	426	428	439	439	441	445	450	454
Total: 7-8	832	892	901	828	836	914	927	914	893	883	869	858	869	880	882	888	897	906	913
Total: 7-8	832	892	901	828	836	914	927	914	893	883	869	858	869	880	882	888	897	906	913
Change	-22	60	9	-73	8	78	13	-13	-21	-10	-14	-11	11	11	2	6	9	9	7
% Change	-2.6%	7.2%	1.0%	-8.1%	1.0%	9.3%	1.4%	-1.4%	-2.3%	-1.1%	-1.6%	-1.3%	1.3%	1.3%	0.2%	0.7%	1.0%	1.0%	0.8%

---

McKibben Nov '2021																			
	2018-19	2019-20	2020-21	2021-22	2022-23	2023-24	2024-25	2025-26	2026-27	2027-28	2028-29	2029-30	2030-31	2031-32	2032-33	2033-34	2034-35	2035-36	2036-37
2021 Best	832	892	901	828	836	914	927	914	893	883	869	858	869	880	882	888	897	906	913
2020 Best - COVID	832	892	901	842	824	852	835	832	796	774	760	763	818	858	875	895	901	894	
Inc/(Dec) Over 2020 Covid	-	-	-	(14)	12	62	92	82	97	109	109	95	51	22	7	(7)	(4)	12	
2020 Best - NO COVID	832	892	901	872	858	901	906	913	888	861	889	927	921	910	905	908	907	901	
Inc/(Dec) Over 2020 No Covid	-	-	-	(44)	(22)	13	21	1	5	22	(20)	(69)	(52)	(30)	(23)	(20)	(10)	5	

## Needham High



McKibben "Best"																			
Nov '2021	2018-19	2019-20	2020-21	2021-22	2022-23	2023-24	2024-25	2025-26	2026-27	2027-28	2028-29	2029-30	2030-31	2031-32	2032-33	2033-34	2034-35	2035-36	2036-37
9	450	380	424	431	447	378	445	456	458	447	438	437	424	426	437	437	439	443	448
10	428	453	377	420	428	443	374	441	451	453	443	434	433	420	424	435	435	437	441
11	404	421	445	377	416	424	439	370	437	446	448	439	430	429	418	422	433	433	435
12	436	401	423	441	372	412	420	435	366	433	442	444	435	426	425	414	418	429	429
Post Grad	4	3	4	8	7	7	7	7	7	7	7	7	7	7	7	7	7	7	7
Total: 9-12	1722	1658	1673	1677	1670	1664	1685	1709	1719	1786	1778	1761	1729	1708	1711	1715	1732	1749	1760
Total: 9-12	1722	1658	1673	1677	1670	1664	1685	1709	1719	1786	1778	1761	1729	1708	1711	1715	1732	1749	1760
Change	37	-64	15	4	-7	-6	21	24	10	67	-8	-17	-32	-21	3	4	17	17	11
% Change	2.2%	-3.7%	0.9%	0.2%	-0.4%	-0.4%	1.3%	1.4%	0.6%	3.9%	-0.4%	-1.0%	-1.8%	-1.2%	0.2%	0.2%	1.0%	1.0%	0.6%

---

	2018-19	2019-20	2020-21	2021-22	2022-23	2023-24	2024-25	2025-26	2026-27	2027-28	2028-29	2029-30	2030-31	2031-32	2032-33	2033-34	2034-35	2035-36	2036-37
Nov '2021																			
2021 Best	1722	1658	1673	1677	1670	1664	1685	1709	1719	1786	1778	1761	1729	1708	1711	1715	1732	1749	1760
2020 Best - COVID	1722	1658	1674	1675	1669	1666	1679	1660	1639	1675	1628	1601	1549	1534	1579	1628	1703	1766	
Inc/(Dec) Over 2020	-	-	(1)	2	1	(2)	6	49	80	111	150	160	180	174	132	87	29	(17)	
2020 Best - NO COVID	1722	1658	1673	1689	1706	1726	1757	1753	1751	1803	1790	1766	1770	1787	1812	1846	1837	1831	
Inc/(Dec) Over 2020	-	-	-	(12)	(36)	(62)	(72)	(44)	(32)	(17)	(12)	(5)	(41)	(79)	(101)	(131)	(105)	(82)	

# **NEEDHAM PUBLIC SCHOOLS PROVISIONAL POPULATION AND ENROLLMENT FORECASTS**

**DECEMBER 7, 2021**

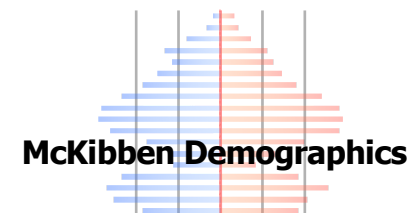
**MCKIBBEN DEMOGRAPHIC RESEARCH, LLC**

**JEROME MCKIBBEN, PH.D.**

**ROCK HILL, SC**

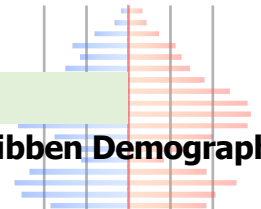
**[j.mckibben@mckibbendemographics.com](mailto:j.mckibben@mckibbendemographics.com)**

**978-501-7069**



## NEEDHAM PUBLIC SCHOOLS—BEST SCENARIO — **PROVISIONAL**

	2010	2015	2020	2025	2030	2035
<b>0-4</b>	1,871	1,950	1,900	1,930	1,870	1,850
<b>5-9</b>	2,488	2,350	2,430	2,190	2,310	2,330
<b>10-14</b>	2,467	2,650	2,500	2,600	2,340	2,460
<b>15-19</b>	1,863	2,040	2,250	2,090	2,190	1,950
<b>20-24</b>	981	950	1,070	1,160	1,090	1,180
<b>25-29</b>	713	780	750	880	1,010	910
<b>30-34</b>	979	1,400	1,470	1,440	1,510	1,580
<b>35-39</b>	1,755	1,800	2,220	2,290	2,190	2,250
<b>40-44</b>	2,293	2,090	2,120	2,820	2,920	2,840
<b>45-49</b>	2,523	2,270	2,210	2,120	2,800	2,900
<b>50-54</b>	2,419	2,480	2,260	2,200	2,100	2,770
<b>55-59</b>	2,045	2,380	2,440	2,210	2,140	2,040
<b>60-64</b>	1,801	2,000	2,290	2,370	2,130	2,070
<b>65-69</b>	1,185	1,670	1,840	2,170	2,240	1,980
<b>70-74</b>	874	1,090	1,530	1,750	2,040	2,060
<b>75-79</b>	830	820	1,020	1,440	1,600	1,870
<b>80-84</b>	776	760	760	940	1,350	1,470
<b>85+</b>	1,041	1,030	1,020	1,000	1,100	1,340
<b>Total</b>	<b>28,904</b>	<b>30,510</b>	<b>32,080</b>	<b>33,600</b>	<b>34,930</b>	<b>35,850</b>
<b>Median Age</b>	42.9	43.2	43.4	43.9	45.1	46.0
<b>Births</b>	1,230	1,260	1,290	1,350	1,320	
<b>Deaths</b>	1,210	1,250	1,310	1,470	1,730	
<b>Natural Increase</b>	20	10	-20	-120	-410	
<b>Net Migration</b>	1,610	1,570	1,250	1,220	1,380	
<b>Change</b>	<i>1,630</i>	<i>1,580</i>	<i>1,230</i>	<i>1,100</i>	<i>970</i>	





# NEEDHAM PUBLIC SCHOOLS TOTAL ENROLLMENT —BEST SCENARIO—PROVISIONAL

	2020-21	2021-22	2022-23	2023-24	2024-25	2025-26	2026-27	2027-28	2028-29	2029-30	2030-31	2031-32	2032-33	2033-34	2034-35	2035-36	2036-37
PK	50	75	75	75	75	75	75	75	75	75	75	75	75	75	75	75	75
K	334	369	382	386	388	392	396	397	398	401	400	398	393	390	388	386	391
1	401	409	391	395	399	401	405	409	410	411	414	413	411	407	405	403	400
2	426	415	417	400	404	409	410	415	419	419	420	424	422	422	418	416	413
3	438	425	421	423	407	411	417	419	424	428	428	430	432	431	430	426	424
4	428	446	431	426	428	413	417	423	423	428	432	435	438	441	439	438	434
5	443	433	451	436	431	433	420	422	428	428	433	438	443	447	450	448	447
Total PK-5	2470	2497	2493	2466	2457	2459	2465	2485	2502	2515	2527	2538	2539	2538	2530	2517	2509
6	394	449	460	462	447	440	439	426	428	434	437	439	445	450	454	457	455
7	462	384	456	467	469	454	444	443	430	432	441	441	443	447	452	456	459
8	441	445	380	447	458	460	449	440	439	426	428	439	439	441	445	450	454
Total: 7-8	903	829	836	914	927	914	893	883	869	858	869	880	882	888	897	906	913
9	425	432	447	378	445	456	458	447	438	437	424	426	437	437	439	443	448
10	378	420	428	443	374	441	451	453	443	434	433	420	424	435	435	437	441
11	445	376	416	424	439	370	437	446	448	439	430	429	418	422	433	433	435
12	425	443	372	412	420	435	366	433	442	444	435	426	425	414	418	429	429
SP	5	7	7	7	7	7	7	7	7	7	7	7	7	7	7	7	7
Total: 9-SP	1678	1678	1670	1664	1685	1709	1719	1786	1778	1761	1729	1708	1711	1715	1732	1749	1760
Total PK-SP	5495	5528	5534	5581	5591	5597	5591	5655	5652	5643	5637	5640	5652	5666	5688	5704	5712
Total PK-SP	5495	5528	5534	5581	5591	5597	5591	5655	5652	5643	5637	5640	5652	5666	5688	5704	5712
Change		33	6	47	10	6	-6	64	-3	-9	-6	3	12	14	22	16	8
%-Change		0.6%	0.1%	0.8%	0.2%	0.1%	-0.1%	1.1%	-0.1%	-0.2%	-0.1%	0.1%	0.2%	0.2%	0.4%	0.3%	0.1%
Total: PK-5	2470	2497	2493	2466	2457	2459	2465	2485	2502	2515	2527	2538	2539	2538	2530	2517	2509
Change		27	-4	-27	-9	2	6	20	17	13	12	11	1	-1	-8	-13	-8
%-Change		1.1%	-0.2%	-1.1%	-0.4%	0.1%	0.2%	0.8%	0.7%	0.5%	0.5%	0.4%	0.0%	0.0%	-0.3%	-0.5%	-0.3%
Total: 6	394	449	460	462	447	440	439	426	428	434	437	439	445	450	454	457	455
Change		55	11	2	-15	-7	-1	-13	2	6	3	2	6	5	4	3	-2
%-Change		14.0%	2.4%	0.4%	-3.2%	-1.6%	-0.2%	-3.0%	0.5%	1.4%	0.7%	0.5%	1.4%	1.1%	0.9%	0.7%	-0.4%
Total: 7-8	903	829	836	914	927	914	893	883	869	858	869	880	882	888	897	906	913
Change		-74	7	78	13	-13	-21	-10	-14	-11	11	11	2	6	9	9	7
%-Change		-8.2%	0.8%	9.3%	1.4%	-1.4%	-2.3%	-1.1%	-1.6%	-1.3%	1.3%	1.3%	0.2%	0.7%	1.0%	1.0%	0.8%
Total: 9-SP	1678	1678	1670	1664	1685	1709	1719	1786	1778	1761	1729	1708	1711	1715	1732	1749	1760
Change		0	-8	-6	21	24	10	67	-8	-17	-32	-21	3	4	17	17	11
%-Change		0.0%	-0.5%	-0.4%	1.3%	1.4%	0.6%	3.9%	-0.4%	-1.0%	-1.8%	-1.2%	0.2%	0.2%	1.0%	1.0%	0.6%

# BROADMEADOW ELEMENTARY ENROLLMENT —BEST SCENARIO—PROVISIONAL

	2020-21	2021-22	2022-23	2023-24	2024-25	2025-26	2026-27	2027-28	2028-29	2029-30	2030-31	2031-32	2032-33	2033-34	2034-35	2035-36	2036-37
<b>K</b>	74	76	77	78	79	80	82	83	83	84	84	83	82	81	80	79	80
<b>1</b>	73	87	79	80	81	82	83	85	86	86	87	87	86	85	84	83	82
<b>2</b>	98	84	89	81	82	83	84	85	87	88	88	89	89	89	88	87	85
<b>3</b>	85	97	86	91	83	84	85	87	88	90	91	91	91	91	91	90	89
<b>4</b>	93	80	98	87	92	84	85	86	86	87	89	90	92	92	92	92	91
<b>5</b>	92	92	81	99	88	93	85	84	85	85	86	88	91	93	93	93	93
<b>Total K-5</b>	<b>515</b>	<b>516</b>	<b>510</b>	<b>516</b>	<b>505</b>	<b>506</b>	<b>504</b>	<b>510</b>	<b>515</b>	<b>520</b>	<b>525</b>	<b>528</b>	<b>531</b>	<b>531</b>	<b>528</b>	<b>524</b>	<b>520</b>
<b>Total: K-5</b>	515	516	510	516	505	506	504	510	515	520	525	528	531	531	528	524	520
<b>Change</b>		1	-6	6	-11	1	-2	6	5	5	5	3	3	0	-3	-4	-4
<b>%-Change</b>		0.2%	-1.2%	1.2%	-2.1%	0.2%	-0.4%	1.2%	1.0%	1.0%	1.0%	0.6%	0.6%	0.0%	-0.6%	-0.8%	-0.8%

# ELIOT ELEMENTARY ENROLLMENT —BEST SCENARIO—PROVISIONAL

	2020-21	2021-22	2022-23	2023-24	2024-25	2025-26	2026-27	2027-28	2028-29	2029-30	2030-31	2031-32	2032-33	2033-34	2034-35	2035-36	2036-37
K	62	72	74	74	73	73	72	72	71	71	70	70	69	69	70	71	72
1	67	67	76	75	75	74	74	73	73	72	72	71	71	70	70	71	72
2	72	69	68	78	77	77	75	75	74	74	73	74	73	73	72	72	73
3	74	75	70	69	80	78	78	76	76	75	75	74	75	74	74	73	73
4	64	75	77	71	70	81	79	79	77	77	76	77	75	77	75	75	74
5	73	71	76	78	72	71	82	80	80	78	78	78	79	77	79	77	77
Total K-5	412	429	441	445	447	454	460	455	451	447	444	444	442	440	440	439	441
Total: K-5	412	429	441	445	447	454	460	455	451	447	444	444	442	440	440	439	441
Change		17	12	4	2	7	6	-5	-4	-4	-3	0	-2	-2	0	-1	2
%-Change		4.1%	2.8%	0.9%	0.4%	1.6%	1.3%	-1.1%	-0.9%	-0.9%	-0.7%	0.0%	-0.5%	-0.5%	0.0%	-0.2%	0.5%

# WILLIAMS ELEMENTARY ENROLLMENT—BEST SCENARIO—PROVISIONAL

	2020-21	2021-22	2022-23	2023-24	2024-25	2025-26	2026-27	2027-28	2028-29	2029-30	2030-31	2031-32	2032-33	2033-34	2034-35	2035-36	2036-37
K	59	77	80	81	81	82	82	81	81	80	80	79	78	77	76	75	77
1	84	89	81	82	83	83	84	84	83	83	82	82	81	80	79	78	77
2	78	86	92	83	84	85	85	87	87	85	85	84	84	83	82	81	80
3	90	79	87	93	84	85	87	87	89	89	87	87	86	87	85	84	83
4	89	91	80	88	94	85	86	88	88	90	90	90	90	89	90	88	87
5	88	86	92	81	89	95	87	88	90	90	92	92	92	93	92	93	91
Total K-5	488	508	512	508	515	515	511	515	518	517	516	514	511	509	504	499	495
Total: K-5	488	508	512	508	515	515	511	515	518	517	516	514	511	509	504	499	495
Change		20	4	-4	7	0	-4	4	3	-1	-1	-2	-3	-2	-5	-5	-4
%-Change		4.1%	0.8%	-0.8%	1.4%	0.0%	-0.8%	0.8%	0.6%	-0.2%	-0.2%	-0.4%	-0.6%	-0.4%	-1.0%	-1.0%	-0.8%

# NEWMAN ELEMENTARY ENROLLMENT —BEST SCENARIO—PROVISIONAL

	2020-21	2021-22	2022-23	2023-24	2024-25	2025-26	2026-27	2027-28	2028-29	2029-30	2030-31	2031-32	2032-33	2033-34	2034-35	2035-36	2036-37
K	78	84	86	87	88	89	91	92	93	95	95	94	93	92	91	90	91
1	105	93	89	90	91	92	93	95	96	97	99	99	98	97	96	95	94
2	99	102	94	91	92	93	94	95	97	98	99	101	101	100	99	98	97
3	118	102	103	95	92	94	95	96	97	99	100	101	103	103	102	101	100
4	95	121	103	104	96	94	96	97	98	99	101	102	103	105	105	104	103
5	101	93	122	104	105	97	96	98	99	100	101	103	104	105	107	107	106
Total K-5	596	595	597	571	564	559	565	573	580	588	595	600	602	602	600	595	591
Total: K-5	596	595	597	571	564	559	565	573	580	588	595	600	602	602	600	595	591
Change		-1	2	-26	-7	-5	6	8	7	8	7	5	2	0	-2	-5	-4
%-Change		-0.2%	0.3%	-4.4%	-1.2%	-0.9%	1.1%	1.4%	1.2%	1.4%	1.2%	0.8%	0.3%	0.0%	-0.3%	-0.8%	-0.7%

## HIGH ROCK ENROLLMENT —BEST SCENARIO—PROVISIONAL

	2020-21	2021-22	2022-23	2023-24	2024-25	2025-26	2026-27	2027-28	2028-29	2029-30	2030-31	2031-32	2032-33	2033-34	2034-35	2035-36	2036-37
6	394	449	460	462	447	440	439	426	428	434	437	439	445	450	454	457	455
Total: 6	394	449	460	462	447	440	439	426	428	434	437	439	445	450	454	457	455
Change		55	11	2	-13	-22	-1	-13	2	6	3	2	6	5	4	3	-2
%-Change		14.0%	2.2%	-7.4%	-2.8%	-4.8%	-0.2%	-3.0%	0.5%	1.4%	0.7%	0.5%	1.4%	1.1%	0.9%	0.7%	-0.4%

# POLLARD MIDDLE SCHOOL ENROLLMENT —BEST SCENARIO—PROVISIONAL

	2020-21	2021-22	2022-23	2023-24	2024-25	2025-26	2026-27	2027-28	2028-29	2029-30	2030-31	2031-32	2032-33	2033-34	2034-35	2035-36	2036-37
7	462	384	456	467	469	454	444	443	430	432	441	441	443	447	452	456	459
8	441	445	380	447	458	460	449	440	439	426	428	439	439	441	445	450	454
<b>Total 7-8</b>	<b>903</b>	<b>829</b>	<b>836</b>	<b>914</b>	<b>927</b>	<b>914</b>	<b>893</b>	<b>883</b>	<b>869</b>	<b>858</b>	<b>869</b>	<b>880</b>	<b>882</b>	<b>888</b>	<b>897</b>	<b>906</b>	<b>913</b>
<b>Total: 7-8</b>	903	829	836	914	927	914	893	883	869	858	869	880	882	888	897	906	913
<b>Change</b>		-74	7	78	13	-13	-21	-10	-14	-11	11	11	2	6	9	9	7
<b>%-Change</b>		-8.2%	0.8%	9.3%	1.4%	-1.4%	-2.3%	-1.1%	-1.6%	-1.3%	1.3%	1.3%	0.2%	0.7%	1.0%	1.0%	0.8%

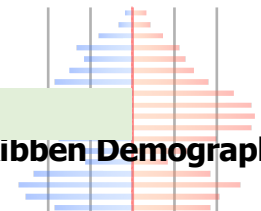
# NEEDHAM HIGH SCHOOL ENROLLMENT —BEST SCENARIO—PROVISIONAL

	2020-21	2021-22	2022-23	2023-24	2024-25	2025-26	2026-27	2027-28	2028-29	2029-30	2030-31	2031-32	2032-33	2033-34	2034-35	2035-36	2036-37
9	425	432	447	378	445	456	458	447	438	437	424	426	437	437	439	443	448
10	378	420	428	443	374	441	451	453	443	434	433	420	424	435	435	437	441
11	445	376	416	424	439	370	437	446	448	439	430	429	418	422	433	433	435
12	425	443	372	412	420	435	366	433	442	444	435	426	425	414	418	429	429
<b>Total 9-12</b>	<b>1673</b>	<b>1671</b>	<b>1663</b>	<b>1657</b>	<b>1678</b>	<b>1702</b>	<b>1712</b>	<b>1779</b>	<b>1771</b>	<b>1754</b>	<b>1722</b>	<b>1701</b>	<b>1704</b>	<b>1708</b>	<b>1725</b>	<b>1742</b>	<b>1753</b>
<b>Total: 9-12</b>	1673	1671	1663	1657	1678	1702	1712	1779	1771	1754	1722	1701	1704	1708	1725	1742	1753
<b>Change</b>		-2	-8	-6	21	24	10	67	-8	-17	-32	-21	3	4	17	17	11
<b>%-Change</b>		-0.1%	-0.5%	-0.4%	1.3%	1.4%	0.6%	3.9%	-0.4%	-1.0%	-1.8%	-1.2%	0.2%	0.2%	1.0%	1.0%	0.6%



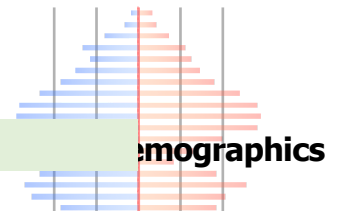
## BROADMEADOW ELEMENTARY—BEST SCENARIO—PROVISIONAL

	2010	2015	2020	2025	2030	2035
<b>0-4</b>	391	390	400	380	400	380
<b>5-9</b>	562	520	520	450	470	480
<b>10-14</b>	545	600	540	550	480	500
<b>15-19</b>	340	410	460	440	440	370
<b>20-24</b>	138	120	190	230	200	220
<b>25-29</b>	97	70	50	130	180	160
<b>30-34</b>	127	220	200	200	250	280
<b>35-39</b>	378	320	420	370	360	410
<b>40-44</b>	465	500	440	580	540	520
<b>45-49</b>	512	460	500	440	580	530
<b>50-54</b>	441	500	460	500	430	570
<b>55-59</b>	394	430	500	450	480	430
<b>60-64</b>	329	390	420	480	430	470
<b>65-69</b>	207	290	340	380	440	400
<b>70-74</b>	172	170	240	300	340	390
<b>75-79</b>	155	160	150	220	270	310
<b>80-84</b>	142	140	150	140	210	250
<b>85+</b>	107	140	160	170	180	220
<b>Total</b>	<b>5,498</b>	<b>5,830</b>	<b>6,140</b>	<b>6,410</b>	<b>6,680</b>	<b>6890</b>
<b>Median Age</b>	41.9	42.7	43.3	43.9	45.2	46.2
<b>Births</b>	200	200	210	230	220	
<b>Deaths</b>	190	210	230	250	290	
<b>Natural Increase</b>	10	-10	-20	-20	-70	
<b>Net Migration</b>	320	320	60	280	270	
<b>Change</b>	330	310	40	260	200	



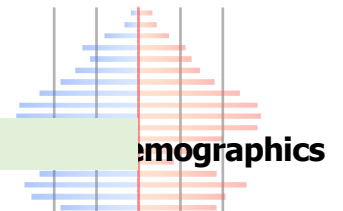
## ELIOT ELEMENTARY—BEST SCENARIO—PROVISIONAL

	2010	2015	2020	2025	2030	2035
<b>0-4</b>	281	300	320	320	320	310
<b>5-9</b>	370	390	400	410	420	410
<b>10-14</b>	350	400	430	440	440	450
<b>15-19</b>	245	280	340	350	370	380
<b>20-24</b>	142	170	210	260	260	240
<b>25-29</b>	157	220	240	270	340	320
<b>30-34</b>	225	230	280	310	340	400
<b>35-39</b>	279	370	360	420	430	460
<b>40-44</b>	385	270	360	360	480	520
<b>45-49</b>	369	380	270	360	360	470
<b>50-54</b>	384	360	380	270	360	360
<b>55-59</b>	306	380	360	370	270	350
<b>60-64</b>	245	300	360	350	360	250
<b>65-69</b>	160	240	290	360	340	350
<b>70-74</b>	137	150	220	280	340	320
<b>75-79</b>	165	130	140	210	260	320
<b>80-84</b>	141	150	120	130	200	230
<b>85+</b>	197	200	200	180	180	200
<b>Total</b>	<b>4,537</b>	<b>4,920</b>	<b>5,280</b>	<b>5,650</b>	<b>6,070</b>	<b>6340</b>
<b>Median Age</b>	42.8	41.9	40.8	40.6	41.2	41.9
<b>Births</b>	230	250	250	280	280	
<b>Deaths</b>	210	220	220	230	270	
<b>Natural Increase</b>	20	30	30	50	10	
<b>Net Migration</b>	360	350	330	110	310	
<b>Change</b>	<b>380</b>	<b>380</b>	<b>360</b>	<b>160</b>	<b>320</b>	



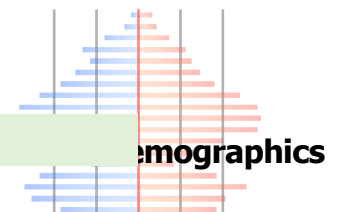
# WILLIAMS ELEMENTARY—BEST SCENARIO—PROVISIONAL

	2010	2015	2020	2025	2030	2035
0-4	341	400	400	400	390	380
5-9	410	420	480	470	470	470
10-14	373	440	450	510	500	500
15-19	445	320	380	400	460	450
20-24	353	280	260	220	250	310
25-29	191	240	170	160	120	150
30-34	230	360	400	320	300	270
35-39	337	390	520	560	470	450
40-44	416	440	390	620	650	570
45-49	475	410	440	390	610	650
50-54	463	470	410	440	390	610
55-59	388	460	460	400	430	380
60-64	362	370	440	450	390	420
65-69	238	300	310	380	390	330
70-74	179	220	280	300	360	360
75-79	165	170	210	260	270	340
80-84	217	150	160	200	250	250
85+	449	380	320	280	270	290
<b>Total</b>	<b>6,030</b>	<b>6,220</b>	<b>6,480</b>	<b>6,760</b>	<b>6,970</b>	<b>7180</b>
Median Age	44.0	43.0	42.3	42.7	44.0	45.3
Births	290	290	300	300	280	
Deaths	360	320	300	310	340	
Natural Increase	-70	-30	0	-10	-60	
Net Migration	280	270	260	250	240	
<b>Change</b>	<b>210</b>	<b>240</b>	<b>260</b>	<b>240</b>	<b>180</b>	



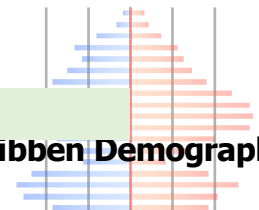
# MITCHELL ELEMENTARY—BEST SCENARIO—PROVISIONAL

	2010	2015	2020	2025	2030	2035
<b>0-4</b>	344	350	330	340	350	360
<b>5-9</b>	461	440	460	370	410	420
<b>10-14</b>	417	490	480	490	400	440
<b>15-19</b>	270	380	470	420	430	340
<b>20-24</b>	120	140	190	220	180	200
<b>25-29</b>	85	50	80	130	170	120
<b>30-34</b>	148	220	210	220	260	270
<b>35-39</b>	294	280	360	380	360	400
<b>40-44</b>	400	290	310	510	520	500
<b>45-49</b>	407	400	290	310	510	520
<b>50-54</b>	383	400	390	290	310	500
<b>55-59</b>	351	380	390	390	280	290
<b>60-64</b>	299	350	360	380	370	270
<b>65-69</b>	174	290	330	360	370	360
<b>70-74</b>	116	160	270	320	340	350
<b>75-79</b>	86	110	150	260	290	320
<b>80-84</b>	79	80	100	140	240	270
<b>85+</b>	88	90	90	100	140	200
<b>Total</b>	<b>4,521</b>	<b>4,900</b>	<b>5,260</b>	<b>5,630</b>	<b>5,930</b>	<b>6130</b>
<b>Median Age</b>	41.5	41.7	40.8	42.4	43.9	45.1
<b>Births</b>	190	200	220	240	230	
<b>Deaths</b>	140	150	180	220	280	
<b>Natural Increase</b>	50	50	40	20	-50	
<b>Net Migration</b>	330	320	300	290	280	
<b>Change</b>	<b>380</b>	<b>370</b>	<b>340</b>	<b>310</b>	<b>230</b>	



# NEWMAN ELEMENTARY—BEST SCENARIO—PROVISIONAL

	2010	2015	2020	2025	2030	2035
0-4	514	510	450	490	410	420
5-9	685	580	570	490	540	550
10-14	783	720	600	610	520	570
15-19	563	650	600	480	490	410
20-24	230	240	220	230	200	210
25-29	183	200	210	190	200	160
30-34	249	370	380	390	360	360
35-39	467	440	560	560	570	530
40-44	628	590	620	750	730	730
45-49	761	620	710	620	740	730
50-54	749	750	620	700	610	730
55-59	607	730	730	600	680	590
60-64	566	590	710	710	580	660
65-69	406	550	570	690	700	540
70-74	271	390	520	550	660	640
75-79	259	250	370	490	510	580
80-84	197	240	230	330	450	470
85+	201	220	250	270	330	430
<b>Total</b>	<b>8,319</b>	<b>8,640</b>	<b>8,920</b>	<b>9,150</b>	<b>9,280</b>	<b>9310</b>
Median Age	43.9	45.2	46.8	48.1	49.2	49.9
Births	320	320	310	300	310	
Deaths	310	350	380	460	550	
Natural Increase	10	-30	-70	-160	-240	
Net Migration	320	310	300	290	280	
<b>Change</b>	<b>330</b>	<b>280</b>	<b>230</b>	<b>130</b>	<b>40</b>	





## Needham School Committee

December 7, 2021

---

Agenda Item:     **School Committee Chair and Subcommittee Updates**

Background Information:

- The Chair and subcommittee members may offer brief updates on issues not on the agenda.

Members of the School Committee available for comment:

Connie Barr, Chair  
Matthew Spengler, Vice Chair  
Andrea Longo Carter  
Michael Greis  
Elizabeth Lee  
Michael O'Brien  
Aaron Pressman  
Dilin Meloni, Student Representative member of School Committee

---



## Needham School Committee

December 7, 2021

---

Agenda Item:     **Superintendent's Comments**

Background Information:

Superintendent Daniel E. Gutekanst will apprise the School Committee of events, information, and matters of interest not on the agenda.

- The Superintendent will welcome the Needham High School Girls' Volleyball Team to congratulate them for winning the Division I Girls' Volleyball Championship and being awarded the Massachusetts Interscholastic Athletic Association Sportsmanship Award.



## Needham School Committee

December 7, 2021

---

Agenda Item:     **Consent Agenda**

1. Approve Minutes of the Meetings of October 5, 2021 and October 19, 2021
2. Accept Donations

Chair: "Does anyone wish to remove any item from the consent agenda?"

If none removed:

"There being no objection, these items are adopted by unanimous consent."



Needham School Committee  
Minutes of the Meeting  
October 5, 2021

Connie Barr, Chairman of the Needham School Committee, called the meeting to order at 6:30 p.m. The meeting is streamed live at <https://needhamchannel.org> and accessible via Zoom for public comment.

Connie Barr, Chair	Andrea Longo Carter
Matthew Spengler, Vice-Chair	Michael O'Brien
Michael Greis	Aaron Pressman
Dilin Meloni (non-voting student member)	

Members of the Central Administration present were:

Dan Gutekanst	Anne Gulati
Terry Duggan	Mary Lammi

Also present were:

Jason Boone, Dore & Whittier Architecture (remote participation)  
Michelle Rogers, Dore & Whittier Architecture (remote participation)  
Hank Haff, Town of Needham Senior Project Manager  
Steven Popper, Town of Needham Director of Design & Construction  
Susannah Hann, Interim Director of Health Services  
Patricia Flueckiger, District Nurse (remote participation)  
Lisa Austin, Needham High School Nurse (remote participation)

Public Comments

Public Comments

Chairman Barr offered the opportunity for members of the public to speak to the School Committee on issues not on the agenda either in person at the Broadmeadow School or on the Zoom link or via email at [schoolcommittee@needham.k12.ma.us](mailto:schoolcommittee@needham.k12.ma.us).

There were no public comments.

School Committee Chair and Subcommittee Update

School Committee  
Chair and  
Subcommittee  
Updates

Chair Barr stated that Elizabeth Lee would not be attending the meeting due to family responsibilities.

Michael Greis reported on the Permanent Public Building Committee (PPBC) meeting he attended recently along with the Superintendent and Assistant Superintendent of Finance and Operations to answer questions and discuss Emery Grover options.

Chair Barr stated that on Monday, October 11, 2021, schools will be closed in honor of Indigenous Peoples Day. She stated that the name was changed from Columbus Day to Indigenous Peoples Day due to the work of two Needham Public Schools students and their presentation to the School Committee. Chair Barr stated that everyone is working hard to promote equity, diversity, and anti-racism. She referred to the Needham Public Schools Human Resources Report and commented on Needham's work to recruit and retain diverse staff.

Superintendent's Comments

Superintendent's  
Comments

Superintendent Gutekanst stated that he had been informed of poor behavior on behalf of middle school students around Town, in parks, and on ball fields. He stated that serious vandalism, trash piles, broken glass, and general misbehavior had been observed and reported. Superintendent Gutekanst stated that he would work with School and Town staff and the School Resource Officers to hold young people accountable and help curb this behavior. He stated that he would also encourage

parents to talk to their children about expectations for their behavior when hanging out with or visiting friends in the community.

Superintendent Gutekanst congratulated the following students who are semifinalists in the 2022 National Merit Scholarship Qualifying Test: Samuel Billante, Benjamin Lee, and Drew Winkler.

Superintendent Gutekanst stated the school district had received a letter from Special Olympics Unified Champion Schools congratulating Needham High School on being a 2021 Special Olympics Unified Champion School. He stated that he is proud of this designation and proud of the unified athletes who have enjoyed their time and demonstrated that everyone could and should participate.

Consent Items

#### Consent Items

1. Approve Minutes of the Meeting of August 26, 2021
2. FY22 Budget Transfers
3. Accept Donations
4. Disposal of Surplus Items

Chair Barr asked if members of the School Committee wanted to remove any items from the Consent Agenda. She stated that because there are no objections, the items are adopted by unanimous consent.

#### DISCUSSION ITEM

#### Facilities Update

Facilities Update

Dr. Gutekanst introduced this item. He stated that Dore & Whittier would present updated information relative to the School Facilities Master Plan and School Committee would receive updated information on the Emery Grover renovation project. Dr. Gutekanst welcomed Jason Boone, Michelle Rogers, and Hank Haff and invited them to present the Master Plan Extension Study.

Mr. Boone presented an overview on solutions that would be more affordable for the Town overall. He described key variations and noted that Dore & Whittier Architecture has already begun some of the work and is forming working groups. He stated that the objective is to wrap up the study with a final presentation to the Permanent Public Building Committee (PPBC) by mid-December. Discussion followed.

Dr. Gutekanst commented on the details of the two working groups. He stated that the middle school group involves the two principals from Pollard and High Rock, Central Office, and the Designers. He stated that the School Committee's goal is to maintain a grade 6-8 middle school program and free High Rock for elementary space and potential swing space for the Mitchell School Renovation Project. Dr. Gutekanst stated that the larger group is dedicated to the extension study and involves participants from the School Committee, Finance Committee, Select Board, School Administration, and Town staff. He stated that this group would be looking at all of the studies and financing together. Discussion followed on elementary and middle enrollment. The entire report is available online at [www.needham.k12.ma.us](http://www.needham.k12.ma.us).

Dr. Gutekanst led the discussion on the School Administration and Operations Renovations update. Dr. Gutekanst recapped the School Committee's discussion and vote to renovate the Emery Grover Building as a historic renovation to the community at the cost of \$28.6M. Dr. Gutekanst stated that over the summer, the designer, PPBC, and Town officials met to reconsider the scope and costs of the project. He stated that the project's proposed scope has been reduced from 34,717 s.f. (+/-) to 21,108 s.f. (+/-) by creating more shared work/office space at the existing school locations; and ensuring space for hybrid work and staff. He stated that the total and proposed cost has been reduced from \$28.6 million to \$20.875 million; the project is still eligible for CPA funding. He added that the proposed cost includes funds to

retrofit Hillside for Emery Grover staff during the period of construction. Dr. Gutekanst described other explored options such as lease space, selling the Emery Grover Building, and moving to another site in town. Dr. Gutekanst noted that relocating to a school is not possible due to space constraints in each school. Dr. Gutekanst stated that the PPBC asked BH+A to estimate the costs of relocating school administration & operations to Hillside and to estimate the cost of tearing down the existing Emery Grover Building and constructing a new one on the parcel.

Dr. Gutekanst summarized what would happen if the October 25th Special Town Meeting discusses and approves design funds for a renovation at Emery Grover as proposed in the warrant article. Dr. Gutekanst also summarized what happens if the October 25th Special Town Meeting does not approve the Emery Grover design funds. Dr. Gutekanst stated that over the last several months there has been substantial analysis, feedback, background work, reduction of scope, costs, and due diligence that has accompanied this feasibility study, and he has concluded that a historic renovation of the Emery Grover Building for school administration and operations is not only the most practical and cost effective but also the best solution for Town Meeting to consider. Discussion followed.

Dr. Gutekanst stated that the School Committee would host an informal Open House for parents and community members on Saturday, October 16th from 9:00 until 10:30 a.m. at Needham High School under the tent on Webster Street.

#### Update on Schools and Learning

#### Update on Schools and Learning

Dr. Gutekanst introduced this item. He stated that the Director of Health Services, Susannah Hann will provide information relating to health and safety at the schools. Dr. Gutekanst welcomed Susannah Hann, Patricia Flueckiger, and Lisa Austin.

Dr. Gutekanst stated that keeping students and staff in school and safe, maintaining health protocols, and reducing health risks remain key priorities and commitments. Dr. Gutekanst stated that the Joint Committee on Health & Safety and the school-based health committees continue to meet, monitor health data, report on compliance with health measures (e.g., mask wearing), and explore issues/concerns. He also stated that recent sample ventilation tests show that out of 50 random rooms tested in all schools on 9/16/21, all but two met the minimum 4 ACH. Dr. Gutekanst stated that there is a great deal of information on the district website and encouraged the community to visit the COVID-19 Dashboard and Public Health data. Dr. Gutekanst expressed his appreciation to families for partnership with the Needham Public Schools and staff on Attestation & COVID Testing.

Dr. Gutekanst stated that the Commissioner of the Department of Elementary and Secondary Educations has lifted the mask requirement as of November 1st but is offering the opportunity for districts to show they have 80% of eligible students and staff vaccinated in order to lift the mask mandate by October 15th. Dr. Gutekanst stated that the Needham Public Schools will not review the mask mandate until November 1st. The Joint Committee on Health and Safety will use other milestones to determine if and when masks should become optional. He stated that these milestones include:

- The positive testing rate locally and statewide
- 14-day daily average incident rate
- Breakthrough Infection Rate
- The percent of Needham school-aged cases among our cases
- Daily completion of the Health Attestation, which is already at 95%

Dr. Gutekanst stated that working in collaboration with the Joint Committee on Health and Safety, he expects that the district will balance public health metrics and advice with the very real and critical need to have the teaching and learning environment become normalized. In other words: Masks will not be forever.

Dr. Gutekanst stated that the Test and Stay Program is up and running. He presented data on this program. Dr. Gutekanst stated that the goal of this program is to keep healthy students in school.

Susannah Hann stated that nurses are working harder than ever doing what they do on a daily basis. She stated that in addition to this, nurses are working with following up on Attestation and COVID Testing case management. She stated that it is a complex system with nuance rules, more so than last year. Ms. Hann stated that the good news is that there are more children in school who are healthy and ready to be in school.

Lisa Austin stated that it is extremely difficult to manage COVID phone calls from parents and meet the needs of students on a daily basis. She stated that it takes a lot of hours, effort, teamwork, and parent collaboration. She stated that it is particularly challenging to contact trace at the high school but that it is getting done.

Patricia Flueckiger commented on the Test and Stay Program. She stated that parents are grateful and thankful for her phone calls and her guidance. She also stated that it takes a great deal of time to trace one case at the high school and that there is not a simple answer to any one question. She stated that there is a lot of work, but the outcome is that children are in school and not isolating at home.

Aaron Pressman expressed his appreciation to Health Services for all their efforts to keep children school. He stated that he wants to be sure that adequate resources are being used to keep everything up and running. He asked if the district has enough people to do contact tracing. Ms. Hann responded that help is needed to support the nurses. She stated that the testing coordinator position will be increased from part-time to full-time. She added that she is looking to hire contact tracing help. She stated that each school's contact trace is about four hours, and the high school is about ten-12 hours for one trace.

#### 2021-2022 Superintendent's Goals

Dr. Gutekanst introduced this item. He stated that annually he presents to the School Committee his goals for the school year. He stated that all professional staff, including the Superintendent, must use the district goals to develop specific and personal goals as part of the Department of Elementary and Secondary Education (DESE) educator evaluation program. Dr. Gutekanst stated that he has incorporated district priorities into his proposed goals for the 2021-2022 school year and will ask the School Committee to vote to support his professional practice, student learning, and district improvement goals at a subsequent meeting. He also stated that he will provide an update on his progress later in the school year and that the School Committee will develop a final evaluation that reflects, in part, the progress on these goal areas. Discussion followed.

#### ACTION ITEM

#### Exempt School Committee Policy KGA to Allow Student Sponsorships in the Hometown Weekly Newspaper

Upon recommendation of the Superintendent that the Needham School Committee approves the exemption of School Committee Policy KGA to allow student sponsorships in the Hometown Weekly Newspaper.

Michael Greis moved, and Matthew Spengler seconded the motion.

Discussion

The motion carried; the vote was 6-0-0

2021-2022  
Superintendent's  
Goals

Exempt School  
Committee Policy  
KGA to Allow  
Student  
Sponsorships in  
the Hometown  
Weekly Newspaper

A motion  
was  
made:

School Committee CommentsSchool Committee  
Comments

Matthew Spengler stated that he attended the Substance Prevention Alliance of Needham (SPAN) quarterly meeting. He stated that he heard an engaging presentation on substance prevention and how students are doing. He encouraged families to visit the website at [www.spanneedham.org](http://www.spanneedham.org) for valuable resources. Mr. Spengler also stated that the MetroWest Adolescent Health Survey was mentioned at the meeting and asked Assistant Superintendent Mary Lammi to talk more about it.

Ms. Lammi stated that the MetroWest Adolescent Health Survey will be initiated in November for grades 6-12. She stated that students will be getting information very soon and will be provided with the time needed during the school day to complete the survey. Ms. Lammi stated that the MetroWest Adolescent Health Survey is used to watch trends, and to understand concerns regarding risk behavior as well as protective factors in regard to keeping children healthy and safe. Ms. Lammi stated that a mental health team has been formed this year to help students struggling with mental health issues. She stated that this team will be a great resource in terms of taking the information from the survey and disseminate it and use it in a way that is helpful for students, families, and staff. Ms. Lammi stated that preliminary results are available mid-year with the full report available late spring.

Dilin Meloni stated that the Student Advisory to the School Committee has two new officers and are looking forward to meeting with the School Committee in two weeks to talk about the opening of school and new upcoming fall events.

Chair Barr encouraged members of the community to send any comments or question they have on the renovation of the of the Emery Grover building to [www.schoolcommittee@needham.k12.ma.us](mailto:www.schoolcommittee@needham.k12.ma.us).

A list of all documents used at this School Committee meeting is available at:  
<http://www.needham.k12.ma.us/districtinfo/schoolcommittee/packets2021-2022>.

A List of  
Documents

A motion was made: At approximately 8:30 p.m., Michael Greis moved, and Andrea Longo Carter seconded the motion to adjourn the School Committee meeting of October 5, 2021.  
The motion carried; the vote was 6-0-0

Adjournment

Minutes Prepared by  
Cheryl Gosmon

Needham School Committee  
Minutes of the Meeting  
October 19, 2021

Connie Barr, Chairman of the Needham School Committee, called the meeting to order at 6:30 p.m. The meeting is streamed live at <https://needhamchannel.org> and accessible via Zoom for public comment.

Connie Barr, Chair  
Matthew Spengler, Vice-Chair  
Michael Greis  
Elizabeth Lee

Andrea Longo Carter  
Michael O'Brien  
Aaron Pressman

Members of the Central Administration present were:

Dan Gutekanst  
Terry Duggan  
Anne Gulati

Mary Lammi  
Alexandra McNeil

Also present were:

Needham High School Principal Aaron Sicotte  
Needham High School students Justin Mok, Brendan Szeto, and Alex McKay  
Student Advisory to the School Committee members  
Eliot School Principal, Karen Bourn  
Broadmeadow School Principal Andrew Garlick  
Broadmeadow Special Education Liaison, Laurie Davis  
Eliot School Grade 2 Teacher, Betsy Maxwell

Public Comments

Public Comments

Chairman Barr offered the opportunity for members of the public to speak to the School Committee on issues, not on the agenda, either in person or on the Zoom link. Chairman Barr noted that members of the community could also contact the School Committee via email at [schoolcommittee@needham.k12.ma.us](mailto:schoolcommittee@needham.k12.ma.us).

Chairman Barr recognized Alexis St. James of 529 High Rock Street

Ms. St. James stated that she is the parent of two children in the Needham Public Schools and her comments are on COVID Surveillance Testing in schools. Ms. St. James stated that Surveillance Testing or Pool Testing provides a critical layer of protection for children and staff. She shared some of the reasons she has heard for not conducting universal COVID Surveillance Testing in Needham. Ms. St. James asked that the school district not wait too long to add an additional layer for students and staff. Ms. St. James provided the School Committee with several pieces of information that highlight the urgent need for universal COVID Surveillance Testing in Needham.

School Committee Chair and Subcommittee Update

School Committee  
Chair and  
Subcommittee  
Updates

Aaron Pressman stated that this week Needham met with the Minuteman School District. He stated that this included himself and two members of the Select Board, two members of the Finance Committee, and Needham's Representative to Minuteman's School Committee, Jeff Stulin. Mr. Pressman stated that Superintendent Edward Bouquillon, who will be retiring at the end of the school year, reported that the new school, which has been rebuilt beautifully is already exceeding its 628 per student capacity. Mr. Pressman noted that 31 students from Needham attend Minuteman. Mr. Pressman stated that there was a lot of discussion on information given to middle school students on the Minuteman opportunity and the school is talking about converting existing space to house a larger number of students.

Superintendent's Comments

Superintendent Gutekanst stated that tomorrow is early release day. He encouraged parents and families to speak with their children about their behavior off-campus during early release day. Superintendent Gutekanst stated that he is working with town partners, Parks and Recreation, the Athletic Department, the Police Department, Needham Youth Services, and the Town Manager's office to make sure that when students leave the campus to enjoy themselves in the center of town, they are doing so in a respectful manner.

Superintendent Gutekanst congratulated two additional Needham High School students on being named 2022 National Merit Scholarship semifinalists: Vijay Fisch and Jeremy Gold.

Superintendent Gutekanst stated that School Committee would hold a meeting on Tuesday, October 26, 2021, to consider and vote on the capital plan.

Superintendent Gutekanst introduced three Needham High School students: Justin Mok, Brendan Szeto, and Alex McKay, who was recently named Disney Magic Makers for the positive impact they have made in their community. Superintendent Gutekanst stated that their initiative in promoting awareness to Stop Asian Hate resulted in raising money to purchase and distribute personal safety items in the Boston Chinatown community.

Students shared details on their initiative, how money was raised and who the items were distributed to. Students also shared their thoughts on the importance of supporting the Asian community.

Dr. Gutekanst stated that the young men teamed up with the Boston Police Department to distribute over 1000 devices to the Asian community in China Town.

Consent Items

## Consent Items

1. Approve Minutes of the Meeting of September 14, 2021
2. FY2 Budget Transfers

Chair Barr asked if members of the School Committee wanted to remove any items from the Consent Agenda. Aaron Pressman stated that he would like to remove the Procurement of Massachusetts Grown Products from the Consent Agenda for further discussion. Chair Barr stated that because there are no objections for the remaining two items, the items are adopted by unanimous consent.

## DISCUSSION ITEM

Needham High School Student Advisory ReportNeedham High  
School Student  
Advisory Report

Dr. Gutekanst introduced this item. He stated that this is the first of several reports the Student Advisory to the School Committee (SASC) will provide the School Committee this year. He also stated that the SASC meets regularly with the principal to discuss school issues, concerns, and ideas with the high school administration. Dr. Gutekanst stated that the students are excited and prepared to discuss these issues with the School Committee and welcome questions and comments. Dr. Gutekanst welcomed Lea Gruen, Hannah Keselman, Max Scott, Danielle Sockol, and Evan Tsingos and invited them to present their report.

Students expressed their appreciation to the School Committee for the opportunity to present the current events of Needham High School and introduced new SASC member Max Scott.

Students reported on fundraising activities and community-wide events. The sophomore class is planning a Touch a Truck event on November 6th at the high school. Community members, especially younger children, and

their parents, are encouraged to come to interact with the trucks and support the class of 2024. The junior class is preparing for the Junior Harbor Cruise and is thankful that a large amount of logistical work had been completed by the seniors. The senior class held a Senior Field Day on October 7. Teams were composed of several homerooms for a total of eight teams. Students competed in relay races, tug of war, and capture the flag. The seniors received support from the PTC, with both breakfast and lunch. Seniors will continue their work on fundraising and planning for Prom.

Students reported on At-Large activities. New and returning students are becoming more accustomed to the everyday schedule, clubs are returning, both after school and before, and sports heading into the second halves of their seasons, with the postseason playoffs approaching for many varsity teams. Homecoming dance will take place on October 22, and community-wide Bonfire the week of Thanksgiving.

Students reported that they have a complete Cabinet in Student Council once again after ninth grade elections. Student Council is looking forward to the Class of 2025's first fundraisers and events.

Students reported that everyone is doing a good job adhering to mask requirements and procedures at the high school, however the general consensus is a desire to be rid of the masks entirely.

Students shared their thoughts on vandalism at Memorial Field and noted that the general feeling toward the vandalism of Memorial Field was disappointment. Students reported that it is unfortunate that a very small population or even a single individual can commit an act of vandalism and have it reflected on the entire student body. Students pointed out that as seen through the volunteering to help clean up the field, the overall lasting impression was that the community of students is stronger than some of its bad parts, and that in truth, a majority of students are working every day to better themselves and the community as a whole.

Students and members of the School Committee engaged in a comment and discussion period.

#### Update on Elementary Learning

#### Update on Elementary Learning

Dr. Gutekanst introduced this item. He stated that Principals Karen Bourn and Andy Garlick will share an update on elementary learning, especially as it relates to the elementary schedule with a focus on ensuring all students have the support, they need to be successful.

Terry Duggan, Assistant Superintendent for Student Learning provided the context for this discussion. Dr. Duggan stated that students experienced unprecedented interruption to learning. She stated that school closures and online instruction impacted students academically, socially, and emotionally. Dr. Duggan stated that academic impact for some students was greater than others, and the interruption to learning exacerbated existing inequalities for students of color and underserved communities. Dr. Duggan stated that students would be returning with greater variability than ever before and that a strategic plan and guiding principles were needed. Dr. Duggan stated that all students should be provided with a high-quality coherent curriculum, that instruction should be inclusive and universally designed and practices for instruction should be inclusive at all times. Dr. Duggan stated that the strategy focuses on three areas: consistent time on learning; a schedule that allows time for support/re-teaching/intervention for all students in a general education setting and strengthening evidenced-based instructional practices.

Principals Karen Bourn and Andrew Garlick presented an overview on how this work is being transformed and appearing in their schools. The entire report is available in this School Committee Packet online at [www.needham.k12.ma.us](http://www.needham.k12.ma.us). Discussion followed.



October 2021 Special Town Meeting Preparation

Dr. Gutekanst led the discussion on this item. He referred to a map of town-owned land in which School Committee considered potential sites as a site for school administration. He also referred to the Finance Committee's proposed amendment to Article 7: Appropriate for Emery Grover Building and Design. Chair Barr stated that she will reach out to the Moderator to determine what options School Committee will have to present additional information to Town Meeting. Discussion followed.

## ACTION ITEM

Procurement of Massachusetts Grown Products

Upon recommendation of the Superintendent that the Needham School Committee votes to establish a preference for products of agriculture grown or produced in the Commonwealth of Massachusetts.

Andrea Longo Carter moved, and Michael Greis seconded the motion

Discussion: Anne Gulati, Assistant Superintendent for Finance and Operations, provided background information on this item.

The motion carried; the vote was 7-0-0

A motion  
was  
made:

Approve 2021-2022 Superintendent's Goals

Approve 2021-2022  
Superintendent's  
Goals

Upon recommendation of the Chair, that the Needham School Committee approves the 2021-2022 Superintendent's goals as submitted.

Aaron Pressman moved, and Michael Greis seconded the motion.

The motion carried; the vote was 7-0-0

A motion  
was  
made:

School Committee Comments

School Committee  
Comments

Chair Barr stated that building within the envelope of the current Emery Grover Building is what the School Committee and School Administration believe is the best plan for Needham, students, staff, and leadership. She stated that it is the least expensive and offers many benefits. Chair Barr stated that this is what the School Committee believes is best. She stated that there had been a great deal of consideration, examination, and planning over many years. Chair Barr stated that School Committee supports Article 7: Appropriate for Emery Grover Building Design.

Matthew Spengler thanked everyone who attended the School Committee Open House on Saturday, October 16<sup>th</sup>.

Michael Greis commented on the opportunities he has had to visit the high school, meeting with the Principal and the Environmental Club. He stated that it is good to see students meeting before and after school in their many extracurricular activities.

A list of all documents used at this School Committee meeting is available at:

<http://www.needham.k12.ma.us/districtinfo/schoolcommittee/packets2021-2022>.

A List of  
Documents

A motion  
was  
made:

At approximately 9:00 p.m., Michael Greis moved, and Andrea Longo Carter seconded the motion to adjourn the School Committee meeting of October 19, 2021.

The motion carried; the vote was 7-0-0

Minutes Prepared by  
Cheryl Gosmon

Adjournment

# NEEDHAM SCHOOL COMMITTEE

**Agenda Item#:** \_\_\_\_\_ **Date:** December 07, 2021

**Item Title:** Approve School Department Donations

**Item Description:** The following donations have been made to Needham Public Schools:

	<u>Est. Value:</u>
• Olin College of Engineering, Needham, MA donated 12 used Dell Laptops to the NHS Robotics Club	\$3,000.00
• Ms. Katelyn Feins, Boston MA, donation to support the Eliot Elementary School Media Department	\$100.00
• The Touchdown Club, Needham, MA donation to support NHS Student Council at Large	\$50.00
• Dr. Dennis L. Slaughter, Milton, MA (through the Needham Diversity Initiative) donation to support the MLK Scholarship Fund	\$600.00
• Chipotle Newton, MA, fundraiser to support the NHS Class of 2024	\$544.27
• Ms. Melissa Zweig, Needham, MA donation to the Nutrition Services Department	\$100.00
• Collections at the Newman Elementary School - Little Mermaid Show, to support the NHS Students Making a Difference Club	\$701.00
• Online fundraising of Spirit wear to support the NHS Student Council at Large	\$85.00
• Online fundraiser of Gear to support NHS Student Council at Large	\$190.00
• Bake Sale proceeds to support the NHS Refugee, Health & Human Rights Club	\$108.00
• Bake Sale proceeds to support the NHS Special Olympics Club	\$56.00
• Bake Sale proceeds to support the NHS Malaria Free World Club	\$79.00
• Bake Sale proceeds to support the NHS Students Acting to Make a Difference Club	\$261.00
• Bake Sale proceeds to support the NHS Bomb Squad Club	\$131.88
• Donations collected at the Football game to support the NHS Ellie Fund Club	\$100.00
• Trunk or Treat Event to support the NHS Habitat for Humanity Club	\$722.90
• Bake Sale Proceeds to support the NHS Packages for Patients Club	\$40.00
• Mask Sale Proceeds to support NHS Student Council At Large	\$50.00
• Donations collected to support the National Honor Society at the volunteering event for the Antique Show	\$50.00

**Issues:** M.G.L. Chapter 44, Section 53A and School Committee policy #DFC/KH authorize the School Committee to accept any grant of gifts or funds given for educational purposes by the federal or state government, charitable foundations, private corporations, PTCs or an individual. M.G.L. Chapter 44, Section 53A further stipulates that any monies received and accepted by the School Committee may be expended without further appropriation.

**Recommendations/Options:** That the School Committee accept with gratitude the aforementioned donations.

**School Committee:** Consent Calendar

Respectfully Submitted,

*Anne Gulati*

Director of Financial Operations



## Needham School Committee

December 7, 2021

---

Agenda Item:     **Discussion**

### **Needham High School Student Advisory Report**

#### Background Information:

- This is the second of several reports the Student Advisory to the School Committee (SASC) will provide the School Committee this year.
- The SASC meets regularly with the principal to discuss school issues, concerns, and ideas with the high school administration.
- The students are excited and prepared to discuss these issues with the School Committee and welcome your questions and comments.

#### Person(s) Available for Presentation:

Lea Gruen  
Hannah Keselman  
Dilin Meloni  
Max Scott  
Danielle Sockol  
Evan Tsingos

---

## MEMORANDUM

To: Needham School Committee

From: Student Advisory to the School Committee

Date: December 7, 2021

The Needham High School Student Council would like to thank the School Committee once again for the opportunity to present the current events of Needham High School.

### **Class Updates:**

**9th Grade:** The 9th grade is expanding from our initial student council meetings toward more finite plans. We plan to create a class motto, with ideas coming from many members of our class. In addition, we are going to have a t-shirt design contest, with the winner receiving a box of Needham merchandise. The winning t-shirt design will be placed on a purchasable class of 2025 shirt. We are also planning a bake sale, which hopefully will happen tomorrow. We hope that our efforts will support class morale and allow for more fun events.

**10th Grade:** The sophomore class has already planned and successfully followed through with many events so far this year whether they be community wide, or class-based. Some of these events include bake sales which have earned us funds to put aside for the class budget. We have also created merchandise which includes long-sleeved shirts and sweatshirts, continuing our efforts from last year to sell them during the past couple of months. In addition, we have partnered with Chipotle to have a night where a percentage of the proceeds are contributed to our class. Now, we are partnering with Bertucci's to have

another similar event on December 9th, as a result of our success with Chipotle. In the spirit of Halloween, we held a costume contest, where the sophomore homerooms could volunteer to participate and the Student Council homeroom judged their costumes. The winning homeroom was awarded a Bagel Breakfast. For the future, we are planning a Winter Event and a Touch-a-Truck. Our Winter Event is still being decided on, but we want to create one that is special for the holidays. Lastly, we would like to support a charity to reach out and give back to the community; we are thinking of promoting Cradles to Crayons.

**11th Grade:** The junior class is currently developing plans for the spring and carrying out more charitable events through the winter. Recently, we participated in a school wide clothing drive that brought in piles of donations to be given to Catie's Closet. Also, holiday grams, candy canes with a festive note attached, have been purchased to spread some holiday cheer and allow students to send caring messages to family and friends. Looking to the future, the preparation for the Junior Harbor Cruise is slowly but surely being completed, and even longer term plans have been enacted for field day next year. Overall, with many students preparing to take large tests, such as the SAT and ACT, as a class we are trying to keep pushing to do our best, and are excited that the year has finally gotten into its groove.

**12th Grade:** The senior class members of Student Council have split into three committees for our spring events: Our rescheduled Harbor Cruise, a Class of 2022 Barbeque (in part funded by the PTC), and planning for Prom, which will take place at The Copley in Boston.

We are currently working on what we want the barbeque to look like and the busing logistics for the cruise. In addition to these events, we designed class-specific sweatshirts which we will be selling for pre-order for approximately \$30. Our hope is that the sweatshirts will prove to be a successful fundraiser for our spring events.

### **At-Large Updates:**

#### **Opening of School Events :**

- Homecoming: Homecoming, which was held on October 22, was quite the success. Around 500 students came to the dance, which is the largest Homecoming we have had in Student Council history. Additionally, we have to again thank the Needham High School Photo Club for sending members to take photos of the dance. They did a fantastic job, and we think it was something that the attendees appreciated as well. Our hope is to build on that overall success for next year's Homecoming and to continue to design and advertise events that students are interested in.
- Bonfire: On November 23, we held our first Bonfire event in two years, which is meant to celebrate the annual Thanksgiving game between Wellesley and Needham. This year because we were unable to have a regular pep rally, we also invited all the captains of fall sports teams to come and have their incredible seasons honored. We especially wanted to recognize our girls' volleyball team for both winning the State Championship and the State Sportsmanship award. In addition to recognizing fall sports, we had performances from jazz ensemble, Varsity cheer,

JV and Varsity dance, and Bomb Squad. We had an incredible turn-out from the community, especially from classmates coming to support their teammates. Finally, we would like to again thank all the town departments, especially Police and Fire, for making the event possible, and for their continued support of the Student Council year after year.

**Student Outreach:** Recently, student groups at NHS, representing different experiences and values at the high school, have been taking part in the Quote Project. Each group was given an opportunity to select a quote that spoke to their experiences at NHS and the values of the community. Student Council members selected some of the submitted quotes and created artwork to bring them to life. During some of the afternoons of half days and in the morning of 11/24, students have been working on putting the artwork and the quotes on the walls in various places around NHS. It is another way of bringing the walls of NHS to life and letting them represent the students of NHS more fully. Their paintings are a work in progress that will be continued over the winter.

**Student Masking Opinion:** Masks at the high school have long been a topic of differing opinion. However, a consensus reveals a desire to make face coverings optional. The common practice of masks breaks during long-block classes has continued on from the 2020-2021 school year. Instead of class activities taking place during the breaks, mask breaks have become true breaks. They mainly serve as a social break, away from the class as a whole, yet many find this break to be more productive than in the past. A short intermission helps students refocus, supporting the idea that the mask break practice has truly been a positive. On the other hand, returning back to the idea of

a mask-optional NHS, although winter is coming, students would love to have the opportunity to choose to wear the covering or not. Of course, students continuously follow guidelines put out by the state and town, but change in the future would be appreciated.





## Needham School Committee

December 7, 2021

---

Agenda Item:     **Discussion**

### **Superintendent's FY23 Operating Budget Request**

#### Background Information:

- The FY2022-2023 (FY23) Budget Request will be sent prior to the meeting.
- FY23 Budget discussions:
  - December 8, 2021 – School Committee & Finance Committee FY23 Budget Workshop
  - December 21, 2021 – Budget Discussion: Student Support Services
  - January 4, 2022 – Budget Consultation with Town Manager
  - January 18, 2022 – Public Hearing on the FY23 Budget
  - January 25, 2022 – Vote on FY23 Budget

#### Persons Available for Presentation:

Dr. Dan Gutekanst, Superintendent of Schools  
Dr. Alexandra Montes McNeil, Assistant Superintendent for Human Resources  
Dr. Terry Duggan, Assistant Superintendent for Student Learning  
Ms. Anne Gulati, Assistant Superintendent for Finance and Operations  
Ms. Mary Lammi, Assistant Superintendent for Student Support Services

---



## Needham School Committee

December 7, 2021

---

Agenda Item:     **Discussion**

**Update on Health & Safety**

Background Information:

- The Superintendent will share health and safety updates.

Person(s) Available for Presentation:

Superintendent Daniel Gutekanst

---



## Needham School Committee

December 7, 2021

---

Agenda Item:     **School Committee Comments**

Background Information:

- Members of the School Committee will have an opportunity to report on events, information, and matters of interest not on the agenda.

Members of the School Committee available for comment:

Connie Barr, Chair  
Matthew Spengler, Vice Chair  
Andrea Longo Carter  
Michael Greis  
Elizabeth Lee  
Michael O'Brien  
Aaron Pressman  
Dilin Meloni, Student Representative member of School Committee

---



## Needham School Committee

December 7, 2021

---

Agenda Item:     **Information Item**

- 2021 Class Size Reports



**Daniel E. Gutekanst, Ed. D.  
Superintendent of Schools**

---

Date: December 3, 2021  
To: Needham School Committee  
From: Daniel Gutekanst  
Re: 2021 Class Size Reports

---

As of October 1, 2021, total PreK-12 student enrollment is 5,526 students.

The enclosed 2021 School Enrollment and Class Size Report is organized in two parts:

- The first part includes a summary of enrollment and class size information in grades PreK-12. This portion of the report provides an overview of elementary class size sections, an overview of middle school class sizes in academic and elective classes, and an overview, by level and grade, of high school class sizes.
- The second part of this report includes additional information about specific class sizes in High Rock, Pollard, and the high school. The Needham High School report also includes trend data and historical class size information.

NEEDHAM PUBLIC SCHOOLS

FY22 ENROLLMENT 10-1-21

ELEMENTARY ENROLLMENT (by grade and school)

GRADE	Broadmeadow	Eliot	Mitchell	Newman	Williams	Total	# cls	Av Cl sz	FTE
K	18	19	15	17	19				
K	19	18	15	18	21				
K	19	18	14	17	19				
K	20	18	16	16	17				
K				16					
						369	21	17.57	21
1	22	23	19	19	22				
1	21	23	18	19	23				
1	22	22	18	17	23				
1	22		19	19	21				
1				19					
						411	20	20.55	20
2	20	17	19	23	22				
2	22	18	18	21	21				
2	21	18	18	19	22				
2	21	16	19	20	21				
2				19					
						415	21	19.76	21
3	20	18	19	20	21				
3	20	19	20	19	20				
3	18	19	20	21	18				
3	20	19	19	21	20				
3	19			20					
						430	22	19.55	22
4	20	18	19	19	17				
4	20	21	18	21	19				
4	21	18	18	21	18				
4	19	18	18	21	18				
4				20	18				
4				19					
4						439	23	19.09	23
5	23	28	23	18	23				
5	24	21	23	19	21				
5	22	22	22	20	21				
5	23		23	18	21				
5				18					
						433	20	21.65	20
	Broadmeadow	Eliot	Mitchell	Newman	Williams	Total	# cls	Av Cl sz	FTE
Total Students	516	431	450	594	506	2497	127	19.69	127
Total Sections	25	22	24	31	25				

3 LBC Eliot 4th grade  
6 LBC Eliot 5th grade

TOTALS FOR NEEDHAM SCHOOL SYSTEM																
	Pre-K	K	1	2	3	4	5	6	7	8	9	10	11	12	SP*	Total
PreSchool	74															74
Broadmeadow		76	87	84	97	80	92									516
Eliot		73	68	69	75	75	71									431
Mitchell		60	74	74	78	73	91									450
Newman		84	93	102	101	121	93									594
Williams		76	89	86	79	90	86									506
High Rock								450								450
Pollard									383	445						828
High School											431	420	377	441	8	1677
TOTAL	74	369	411	415	430	439	433	450	383	445	431	420	377	441	8	5526

\*SP indicates post graduate special education students counted separately by DESE October enrollment

NPS also has 74 Out of District students with special needs paid for by the district. The DESE excludes out of district placements from District enrollment.

# NEEDHAM PUBLIC SCHOOLS

## FY22 ENROLLMENT 10-1-21

### ELEMENTARY ENROLLMENT (by grade and school)

GRADE	Broadmeadow	Eliot	Mitchell	Newman	Williams	Total	# cls	Av Cl sz	FTE
K	18	19	15	17	19				
K	19	18	15	18	21				
K	19	18	14	17	19				
K	20	18	16	16	17				
K				16					
						369	21	17.57	21
1	22	23	19	19	22				
1	21	23	18	19	23				
1	22	22	18	17	23				
1	22		19	19	21				
1				19					
						411	20	20.55	20
2	20	17	19	23	22				
2	22	18	18	21	21				
2	21	18	18	19	22				
2	21	16	19	20	21				
2				19					
						415	21	19.76	21
3	20	18	19	20	21				
3	20	19	20	19	20				
3	18	19	20	21	18				
3	20	19	19	21	20				
3	19			20					
						430	22	19.55	22
4	20	18	19	19	17				
4	20	21	18	21	19				
4	21	18	18	21	18				
4	19	18	18	21	18				
4				20	18				
4				19					
4						439	23	19.09	23
5	23	28	23	18	23				
5	24	21	23	19	21				
5	22	22	22	20	21				
5	23		23	18	21				
5				18					
						433	20	21.65	20
	Broadmeadow	Eliot	Mitchell	Newman	Williams	Total	# cls	Av Cl sz	FTE
Total Students	516	431	450	594	506	2497	127	19.69	127
Total Sections	25	22	24	31	25				

October 1, 2021 Average Elementary Class Size Grades K-5 19.69

# Middle School (High Rock and Pollard)

## Middle School Class Size 2021-2022 by Subject and Grade

COURSES	GRADE LEVEL	NUMBER OF SECTIONS	AVERAGE SIZE	MINIMUM	MAXIMUM	UNDER 15	15-25	OVER 25
ART	6	20	20.90	16	24	0	24	0
	7	36	13.94	7	19	18	1	0
	8	69	16.67	7	23	19	4	0
ELL	6	2	5.00	4	6	2	4	0
	7	2	5.50	5	6	2	4	0
	8	3	2.00	1	4	3	1	0
ENGLISH	6	33	14.88	2	24	13	11	0
	7	22	17.45	1	21	3	18	0
	8	24	19.08	2	24	4	20	0
Average Class Size 6-8			17.14					
MATH	6	23	19.57	2	23	3	20	0
	7	32	16.34	1	21	7	14	0
	8	31	18.16	2	24	6	18	0
Average Class Size 6-8			18.02					
MUSIC	6	40	19.90	8	26	7	16	3
	7	20	14.40	10	22	11	11	0
	8	21	17.00	10	32	9	22	1
SCIENCE	6	21	21.43	2	24	1	23	0
	7	41	17.61	1	24	5	19	0
	8	43	20.21	2	24	4	20	0
Average Class Size 6-8			19.75					
SOCIAL STUDIES	6	21	21.43	2	24	1	23	0
	7	21	18.29	1	22	1	21	0
	8	21	21.24	2	24	1	23	0
Average Class Size 6-8			20.32					
TECHNOLOGY	6	20	20.85	16	24	0	24	0
	7	18	14.11	11	21	11	10	0
WELLNESS	6	60	22.32	13	25	3	22	0
	7	72	16.81	7	25	25	0	0
	8	96	19.83	10	28	11	13	4
WORLD LANGUAGES	6	20	21.00	10	25	1	24	0
	7	22	15.95	12	20	6	14	0
	8	34	19.15	11	25	5	20	0

Grade 6                      450  
 Grade 7                      384  
 Grade 8                      447  
 Total Enrollment        1281 as of November 3, 2021

Average Class Size Core Subjects Middle School 6-8                      18.81



# Needham High School

## Needham High School Class Size 2021-2022 by Subject and Grade

COURSES	GRADE LEVEL	Number of Sections	AVERAGE SIZE	MINIMUM	MAXIMUM	UNDER 15	15-25	OVER 25
ART	09	3	21.00	21	21	0	3	0
	10	2	16.00	15	17	0	2	0
	11	3	8.67	3	12	3	0	0
	12	2	14.50	4	25	1	1	0
	Multiple	72	16.88	1	22	15	57	0
ELL	Multiple	1	6.00	6	6	1	0	0
ENGLISH	09	22	19.59	12	25	4	18	0
	10	19	21.89	9	26	2	13	4
	11	13	19.38	2	26	2	9	2
	12	27	20.96	3	53	7	12	8
	Multiple	7	9.43	1	23	5	0	0
			18.25					
MATH	09	19	17.32	1	24	6	13	0
	10	22	20.00	3	26	2	18	2
	11	20	18.00	3	26	6	11	3
	12	27	21.00	1	28	3	18	6
	Multiple	17	15.59	1	24	8	9	0
			18.38					
MUSIC	11	1	1.00	1	1	1	0	0
	12	1	5.00	5	5	1	0	0
	Multiple	31	11.32	1	38	23	6	2
SCIENCE	09	24	18.25	9	24	3	21	0
	10	23	18.61	8	24	5	18	0
	11	19	19.79	14	23	1	18	0
	12	20	18.65	2	24	3	17	0
	Multiple	3	18.00	16	20	0	3	0
			18.66					
SOCIAL STUDIES	09	25	17.16	9	23	5	20	0
	10	22	19.18	8	23	2	20	0
	11	20	18.85	2	24	3	17	0
	12	22	21.82	3	26	1	20	1
	Multiple	2	7.50	1	14	2	0	0
			16.90					
TECHNOLOGY	Multiple	15	8.80	1	24	13	2	0
WELLNESS	09	20	21.65	11	29	2	14	4
	10	18	23.44	16	28	0	9	9
	11	18	20.89	12	27	5	5	8
	12	22	19.77	1	26	2	19	1
WORLD LANGUAGES	09	22	18.91	8	25	3	19	0
	10	22	18.41	2	25	4	18	0
	11	22	16.27	3	24	8	14	0
	12	9	11.78	1	23	5	4	0
	Multiple	6	12.17	2	18	3	3	0

Grade 9	432
Grade 10	421
Grade 11	377
Grade 12	439
Grade 13	8
Total Enrollment	<u>1677</u> as of November 3, 2021

Average Class Size Core Subjects Needham High School 9-13

18.05

# Needham High School

## Needham High School Class Size 2021-2022 by Subject and Course Level

COURSE	COURSE LEVEL	NUMBER OF SECTIONS	AVERAGE SIZE	MINIMUM	MAXIMUM	UNDER 15	15-25	OVER 25
ART	ACC	3	9.33	1	25	2	1	0
	AP	3	8.67	3	12	3	0	0
	HON	2	16.00	15	17	0	2	0
		74	17.28	1	22	14	60	0
ELL		1	6.00	6	6	1	0	0
ENGLISH	ACC	27	24.07	14	53	1	18	8
	AP	7	24.00	13	28	1	2	4
	HON	36	20.11	3	26	4	30	2
	CP	9	13.00	9	18	7	2	0
		9	8.00	1	23	7	2	0
MATH	ACC	20	21.50	14	26	1	17	2
	AP	12	23.83	17	28	0	7	5
	HON	38	20.16	4	26	2	33	3
	CP	14	14.00	8	20	10	4	0
		21	13.48	1	26	12	8	1
MUSIC	ACC	6	6.00	1	11	6	0	0
	AP	1	5.00	5	5	1	0	0
		26	12.15	1	38	18	6	2
SCIENCE	ACC	37	20.65	12	24	1	36	0
	AP	7	19.71	13	24	1	6	0
	HON	35	18.49	11	24	4	31	0
	CP	7	12.00	8	15	5	2	0
		3	12.00	2	18	1	2	0
SOCIAL STUDIES	ACC	26	20.15	13	23	1	25	0
	AP	15	22.60	19	25	0	15	0
	HON	40	19.38	13	26	3	36	1
	CP	7	11.29	8	15	6	1	0
		3	2.00	1	3	3	0	0
TECHNOLOGY	AP	1	24.00	24	24	0	1	0
		14	7.71	1	16	13	1	0
WELLNESS		78	21.36	1	29	9	47	22
WORLD LANGUAGES	ACC	35	19.11	7	25	3	32	0
	AP	5	14.20	11	18	2	3	0
	HON	31	16.42	1	25	10	21	0
	CP	9	11.89	8	15	7	2	0
		1	2.00	2	2	1	0	0

as of November 3, 2021

# **HIGH ROCK SCHOOL M E M O R A N D U M**

**To:** Daniel Gutekanst  
**From:** Jessica R. Downey  
**Date:** November 2021  
**Re:** Class Size Reports

Enclosed are the class size reports for High Rock School. These figures come from our enrollment figures dated November 2021. Below are highlights of the attached information:

## **School Enrollment – 449 [447 @ High Rock - 2 @ Pollard]**

### **Cluster Class Size** (English, Science, Social Studies & Math)

Cluster	Total	Average Section Sizes	Section Ranges
1	87	21.75	17-22
2	93	23.25	21-24
3	90	22.5	22-23
4	89	22.25	20-23
5	88	22	20-24

### **SEL & Intervention Programming**

	# Sections	Range	Average Class Size	# Under Average	# Over Average
Advisory	30	13-16	15	11	10
Cluster Time*	20	21-24	22	4	7
Independent Reading**	20	17-22	21	8	6

*Cluster Time & Independent Reading are blocks where general education intervention methods are provided to review and reinforce skills.*

*\*Students are pulled for Math Intervention for rotations of time.*

*\*\*Some students are dropped from IR in order to receive support programming in Reading & Special Ed.*

### **Enrichment Class Size**

Course	# Students	#Sections	Range
Art	418	20	16-23
Computer Technology	416	20	20-23
Literacy for Learning	414	20	18-24
Reading Support*	41	10	3-6
Wellness	447	20	13-25
Spanish	420	20	10-25
Strings	51	2	24-25
Beginning Band	42	4	8-13
Concert Band	57	4	11-21
Chorus & Gen Music	215	10	18-26

*\* Will grow due to student needs assessments throughout the school year.*

## Support Programming

Program	# Students
Special Education*	80 students**
Reading Support*	41 students**
Math Intervention	40 students***

*\*Some students have a reduction in their enrichment enrollment in order to schedule support programming.*

*\*\*Historically we see growth in this number as the year progresses due to identifying needs.*

*\*\*\* Students are pulled from the Cluster Time Intervention block to receive this service.*

## Reduction in Enrichment Enrollment

Course	# Students out of 447
Wellness	0
World Language Courses	27
Rotation Courses (Art, Tech, Literacy)	29/31/33
Chorus	82

## Projected vs. Actual

	<b>Projected for '21</b> <i>Nov 2020 -Last Year</i>	<b>Actual in '21</b> <i>Nov 2021 -This Year</i>	<b>Projected* for '22</b> <i>Nov 2021 - Next Year</i>
Enrollment	456	449	433
Clusters	91-92	87-93	86-87
Special Education	87	80	100

*\*Since special education programming is higher, a similar reduction of students from enrichment classes was calculated as identified in Nov. 2021.*

## Lunch & Recess

Lunch	Numbers
10:49 - 11:14	88
11:14 - 11:39	93
11:39 - 12:04	87
12:04 - 12:29	89
12:29 - 12:54	90



# Pollard Middle School

Ms. Megan Bonomolo  
Grade 8 Assistant Principal

Ms. Tamatha Bibbo  
Principal

Mr. Jeremy Greenwood  
Grade 7 Assistant Principal

**To: Dr. Dan Gutekanst**

**From: Tamatha Bibbo**

**Date: December 1, 2021**

**Subject: Class Size Reports**

Please find the class size report for the Pollard Middle School. These figures reflect our enrollment figures as of December 1, 2021. Below are highlights of the information:

**School Enrollment: 832**      Grade 7 – **385**      Grade 8 – **447**

**Cluster Class Size (English, Math, Science & Social Studies):**

Cluster Grade 7	Total	Average Class Size
7-1	74	19
7-2	77	20
7-3	80	20
7-4	75	19
7-5	75	19
Cluster Grade 8	Total	Average Class Size
8-1	88	22
8-2	89	22
8-3	87	21
8-4	89	22
8-5	91	23

**Advisory**

Grade	# Sections	Range	Average Size
7	37	10-12	10
8	41	9-12	11

**Lunch Period**

Grade 7	1 <sup>st</sup> Lunch	224
Grade 7	2 <sup>nd</sup> Lunch	157
Grade 8	1 <sup>st</sup> Lunch	178
Grade 8	2 <sup>nd</sup> Lunch	269

**Elective/ Enrichment Class Size: Grade 7**

<b>Subject</b>	<b># of Sections</b>	<b>Range</b>	<b>Average for Class Size</b>	<b># of Sections 25+</b>
Art 7	24	7-19	15	0
Cambiata Chorus 7	1	11	11	0
Ceramics/Sculpture 7	12	10-18	14	0
Computer Technology 7	18	11-19	14	0
Concert Band 7	3	17-22	19	0
Engineering Design 7	20	11-22	17	0
Experiential Ed 7	12	10-20	14	0
Health 7	24	7-21	14	0
PE 7	36	11-25	20	2
French 7	4	18-20	19	0
Music Explorations 7	12	10-20	13	0
Spanish 7	16	12-17	15	0
String Ensemble 7	2	15-20	18	0
Treble Chorus 7	2	15-19	17	0
Mandarin 7	2	16-17	17	0
Data Science & Visualization I	9	18-21	20	0
Literacy Support 7	2	10-15	10	0

**Elective/ Enrichment Class Size: Grade 8**

<b>Subject</b>	<b># of Sections</b>	<b>Range</b>	<b>Average for Class Size</b>	<b># of Sections 25+</b>
Art 8	24	9-23	17	0
Cambiata Chorus 8	1	14	14	0
Ceramics/Sculpture 8	15	13-22	17	0
2D Design	15	14-21	15	0
Chinese Culture 8	6	18-25	22	1
Global Arts 8	15	7-23	16	0
Concert Band 8	3	14-20	16	0
Engineering Design 8	22	12-23	19	0
Experiential Ed 8	15	12-25	17	1
Health 8	21	10-23	20	0
PE 8	60	13-28	21	10
French 8	5	11-19	15	0
Perspective & Connections Culture 8	6	14-21	18	0
Spanish 8	15	16-24	20	0
Mandarin 8	2	12-19	16	0
Theater Musical Arts 8	15	10-22	16	0
String Ensemble 8	1	21	21	0
Treble Chorus 8	1	32	32	1
Data Science & Visualization II	3	16-18	17	0
Literacy Support 8	3	10-12	10	0



# NEEDHAM HIGH SCHOOL

Aaron Sicotte  
Principal

Mary Kay Alessi  
Alison Coubrough-  
Argentieri  
Pierre Ioan

To: Dr. Daniel Gutekanst, Superintendent  
From: Aaron Sicotte, Principal  
Re: 2021-2022 NHS Class Size Report  
Date: 20 November 2021

Please find in the report that follows class size data for Needham High School for the 2021-2022 school year. Data have been gathered based on the October 1, 2021 figures. There have been a small number of student course enrollment changes since that time that are not reflected in this document. You will also find matrices that provide the current number of students per section, as well as, the total teacher course load for this year. As this document will demonstrate, our teachers are continuing to provide excellent support for our students, even with the increasing enrollment.

## **Average Teacher Load**

Tables 1 and 2 provide statistics related to staffing allocations in each department. These data reflect mean student to teacher ratios within each department that are then compared to a target load set by the department chairs and directors and the principal during the spring of the previous school year. The staffing formula is designed to attain average student-teacher ratios within five students of the target loads. This methodology is not used, however, when calculating ratios within the music and theater programs, as the nature of performing arts and ensemble programs do not lend themselves to standard class size formulas. Note: The Wellness Total Enrollment reflects the total student enrollment during the first semester of the school year. Since Wellness is a semester-based course, the other half of the student body takes the class in semester 2.

**Table 1**

*Average Teacher Load & Department Enrollment, Semester 1 2021-2022*

*Based Upon October 1, 2021 Enrollment of 1677 Students.*

Department	FTE	Total Enrollment	% of NHS Enrollment	Target Teacher Load (in students)	Actual Average Teacher Load (in students)
English	20.25	1691	101	92	84
Math	19	1846	110	100	97
Science	18.6	1789	107	95	96
Social Studies	18	1717	102	100	95
World Languages	15.2	1290	77	95	85
Visual Arts	8.0	744	44	100	93
Performing Arts	3.5	259	15	-	74
Wellness	7.6	832	50	100	110



# NEEDHAM HIGH SCHOOL

Aaron Sicotte  
Principal

Mary Kay Alessi  
Alison Coubrough-  
Argentieri  
Pierre Ioan

Table 2 presents the aggregate data comparing school years 2013-14 through 2021-22. The average teacher load has dipped this year due to a few different factors. NHS had a slight decline in our anticipated enrollment, which was likely to be pandemic-influenced. The typical NHS student also is taking a slightly reduced course load (on average), which may also be influenced by the pandemic and their effort to find balance and success in what they take on. Despite this overall decline, two departments saw average increases to the overall teacher load. In contrast, the averages for Visual and Performing Arts declined, which is a result of correcting the historical way the averages have been tabulated, which did not isolate the first semester enrollment. Notes: 1. Year-to-year increases in average teacher loads within departments are highlighted. 2. Data for 2020-21 are not listed due to the cohorted structure of the year.

**Table 2**

*Average Actual Teacher Load Comparisons  
School Year 2013-14 through 2021-22*

Department	13-14	14-15	15-16	16-17	17-18	18-19	19-20	21-22
English	88	88	90	90	89	92	88	84
Math	108	105	105	104	107	106	100	97
Science	95	96	90	90	96	101	89	96
Social Studies	105	103	99	100	102	100	101	95
World Language	103	102	97	98	94	92	91	85
Visual Arts	94	92	97	105	106	110	111	93
Performing Arts	176	157	130	129	122	116	129	74
Wellness	115	110	110	111	112	112	107	110
Overall Average	111	107	102	103	104	104	102	92

## Class Size Range

Table 3 reflects the range of enrollment within course sections across academic areas. During our scheduling process, we prioritize keeping sections as balanced as possible, although that is not always feasible with the many variables and complications of creating a high school schedule. This year, we were able to prioritize appropriately sized class averages for most of our students, allowing teachers to provide the individualized support and instruction students have needed coming through the previous 18 months of school. Our effort resulted in a slight shift to the left in the chart below, while still remaining generally consistent with previous years.

**Table 3**

*Class Size Range in Sections, Semester 1 2021-2022*





# NEEDHAM HIGH SCHOOL

Aaron Sicotte  
Principal

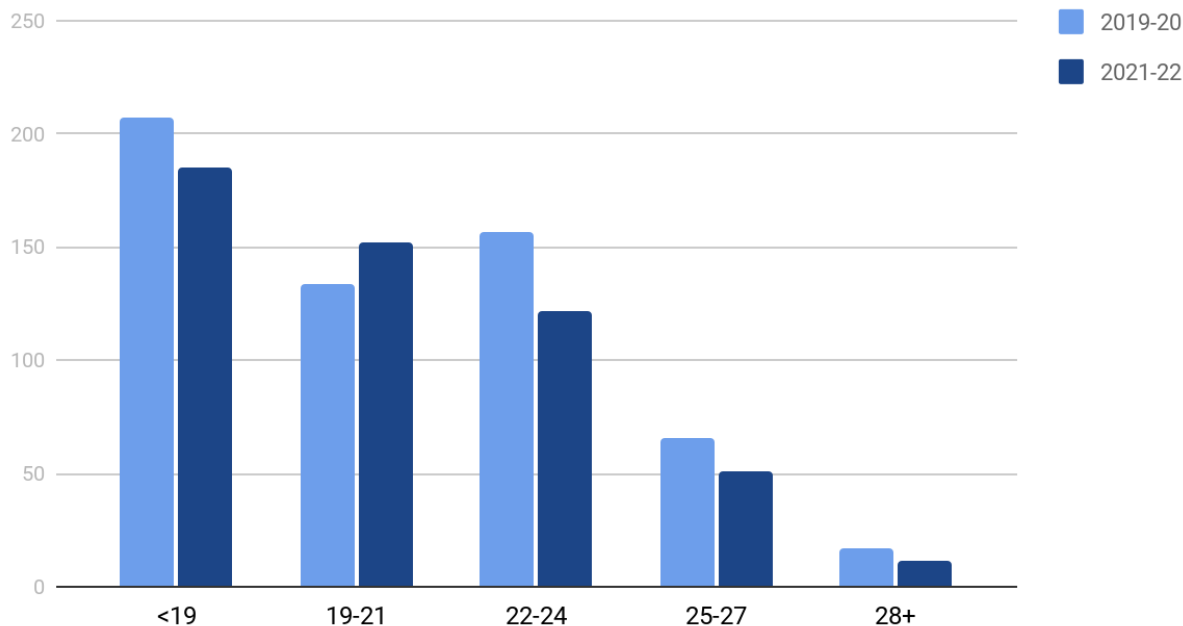
Mary Kay Alessi  
Alison Coubrough-  
Argentieri  
Pierre Ioan

Department	<19	19-21	22-24	25-27	28+	Total
English	21	11	22	17	5	76
Math	33	21	24	13	2	93
Science	33	37	24	n/a	n/a	94
Social Studies	27	35	20	7	-	89
World Language	42	12	20	2	-	76
Arts	23	24	5	1	2	55
Wellness	6	12	7	11	2	38
Total Sections	185	152	122	51	11	521

**Chart 1**

*Section Enrollment Comparisons – 2019-2020 and 2021-2022*

## Section Enrollment Comparisons



## Impact Statement



# NEEDHAM HIGH SCHOOL

*Aaron Sicotte*  
Principal

*Mary Kay Alessi*  
*Alison Coubrough-*  
*Argentieri*  
*Pierre Ioan*

Many of our students entered the school year with increased academic and social-emotional needs. Needham High School faculty and staff have done an outstanding job of providing those supports in all aspects of the students' experiences. Within classrooms, we have prioritized individualized instructional support and worked hard to keep classes balanced so teachers can provide that attention in consistent class sizes. Overall, our class averages appear to have taken a positive shift. It is important to note, though, that the specific needs of each student this year have increased, countering the potential benefit of those lower average sizes. Within this challenging context, teachers have remained focused on and successful with providing a vibrant place to learn and grow, and we will continue to meet our students' needs with instruction that is engaging and personalized and class offerings that are diverse and robust.